

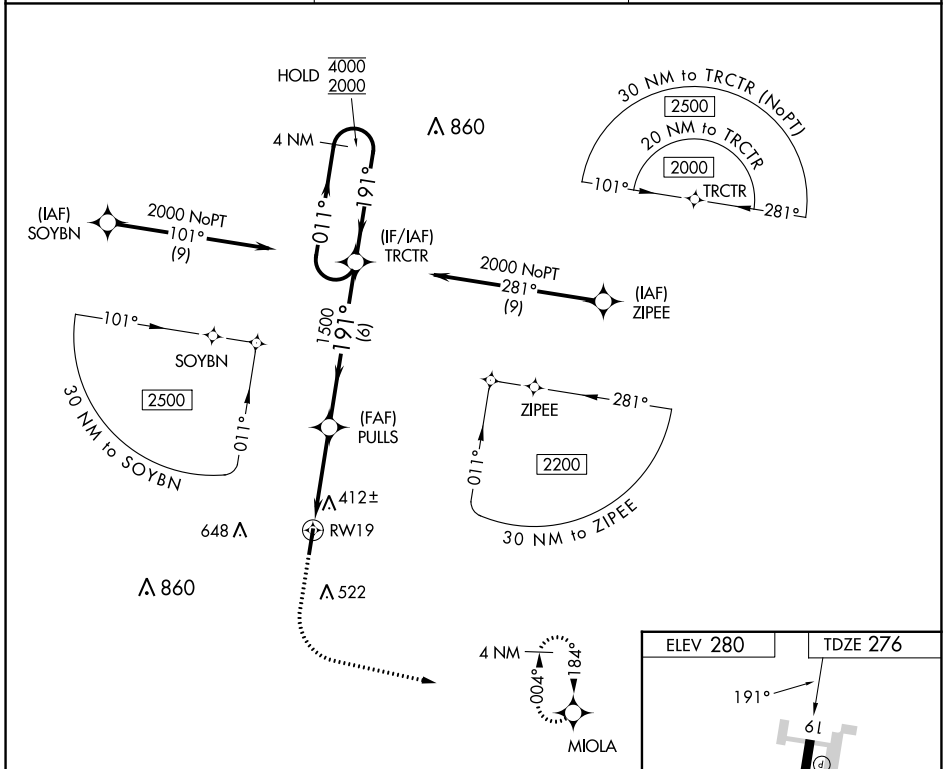
APP CRS	Rwy Idg	5003
191°	TDZE	276
	Apt Elev	280

RNAV (GPS) RWY 19

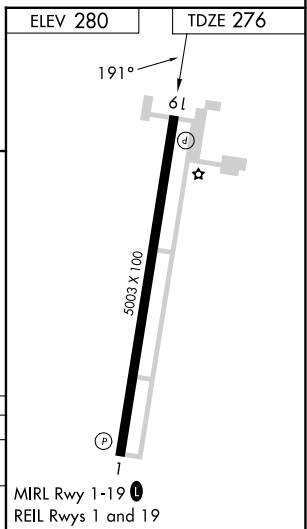
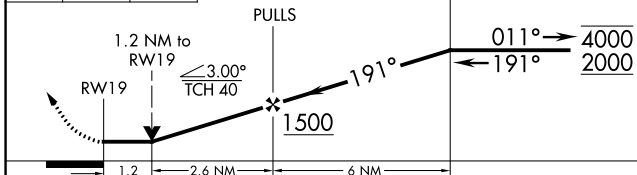
COVINGTON MUNI (M04)

RNP APCH - GPS.	MISSED APPROACH: Climb to 1400 then climbing left turn to 3000 direct MIOLA and hold.
Rwy 19 helicopter visibility reduction below 3/4 SM NA.	

AWOS-3 118.575	MEMPHIS APP CON 125.8 338.3	UNICOM 123.0 (CTAF)
--------------------------	---------------------------------------	-------------------------------



1400 3000 MIOLA VGSI and descent angles not coincident (VGSI Angle 3.00/TCH 29). 4 NM Holding Pattern



CATEGORY	A	B	C	D
LNVA MDA	680-1	404 (400-1)	680-1½	404 (400-1½)
CIRCLING	760-1 480 (500-1)	840-1 560 (600-1)	960-2 680 (700-2)	960-2¼ 680 (700-2¼)

MIRL Rwy 1-19
REIL Rwy 1 and 19

SE-1, 26 DEC 2024 to 23 JAN 2025

SE-1, 26 DEC 2024 to 23 JAN 2025