

PITTSFIELD, ILLINOIS

AL-6310 (FAA)

23334

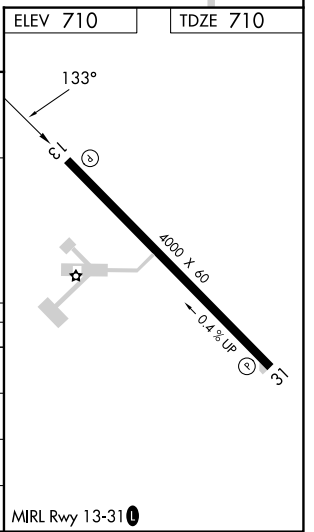
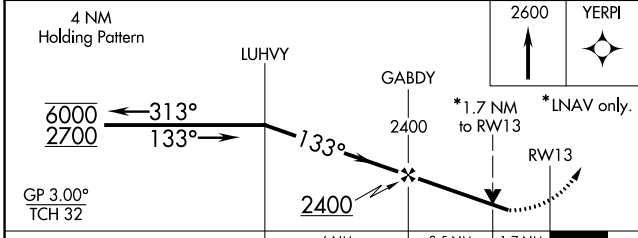
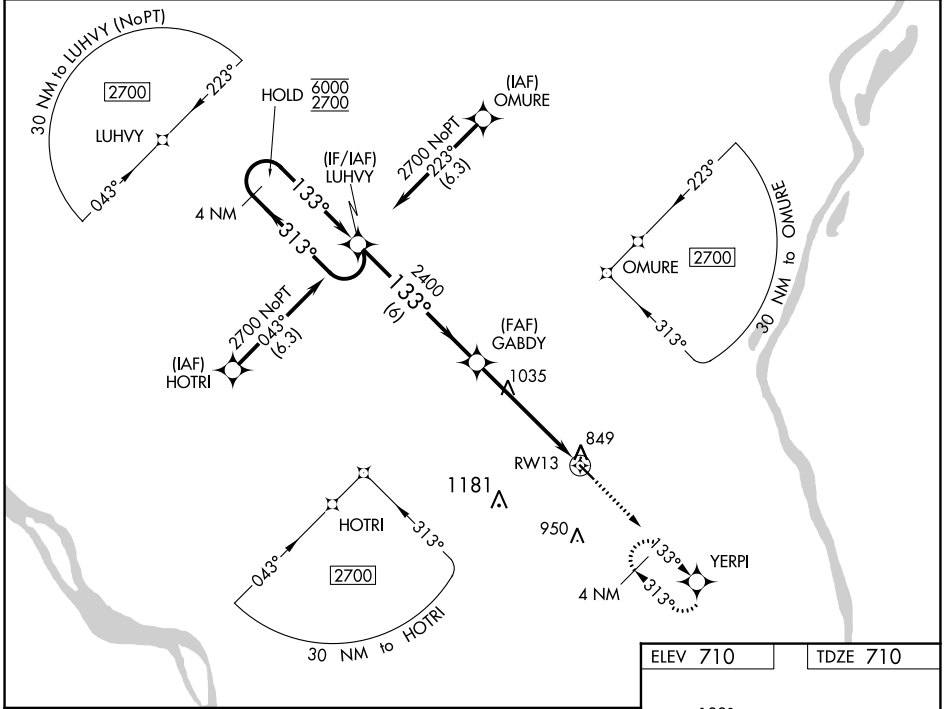
WAAS CH 86642 W13A	APP CRS 133°	Rwy Idg 4000 TDZE 710 Apt Elev 710
--	------------------------	---

RNAV (GPS) RWY 13

PITTSFIELD PENSTONE MUNI (PPQ)

RNP APCH.	For uncompensated Baro-VNAV systems, LNAV/VNAV NA below -16°C or above 54°C. Rwy 13 helicopter visibility reduction below 3/4 SM NA.	MISSED APPROACH: Climb to 2600 direct YERPI and hold.
-----------	---	---

AWOS-3PT 118.525	KANSAS CITY CENTER 126.225 317.775	UNICOM 122.8 (CTAF) 0
----------------------------	--	---------------------------------



CATEGORY	A	B	C	D
LPV DA	960-1	250 (300-1)		NA
LNAV/VNAV DA	1168-1 3/8	458 (500-1 3/8)		NA
LNAV MDA	1300-1	590 (600-1)	1300-1 3/4 590 (600-1 3/4)	NA
C CIRCLING	1300-1	590 (600-1)	1340-1 3/4 630 (700-1 3/4)	NA

PITTSFIELD, ILLINOIS
Amdt 1 20JUN19

39°38'N-90°47'W

PITTSFIELD PENSTONE MUNI (PPQ)
RNAV (GPS) RWY 13

EC-3, 26 DEC 2024 to 23 JAN 2025

EC-3, 26 DEC 2024 to 23 JAN 2025