

NDB SYZ <b>365</b>	APP CRS <b>010°</b>	Rwy Idg TDZE Apt Elev	<b>N/A</b> <b>N/A</b> <b>619</b>
-----------------------	------------------------	-----------------------------	--

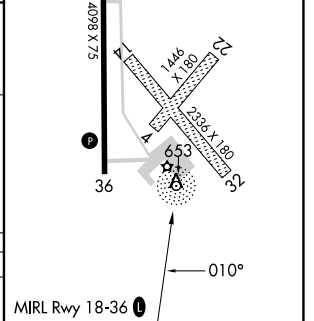
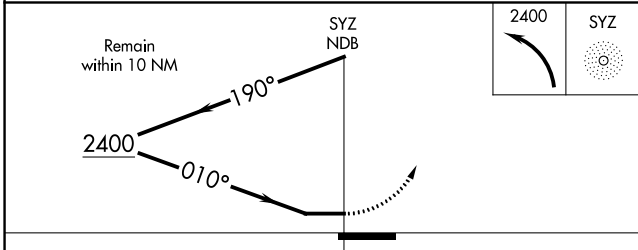
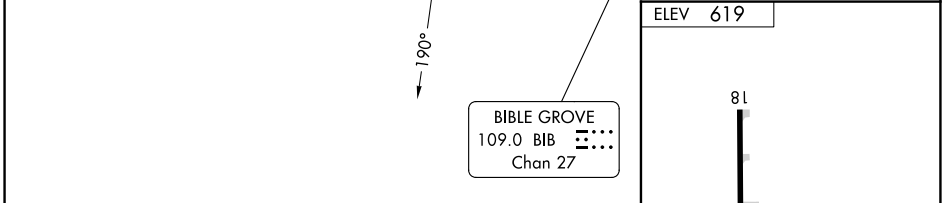
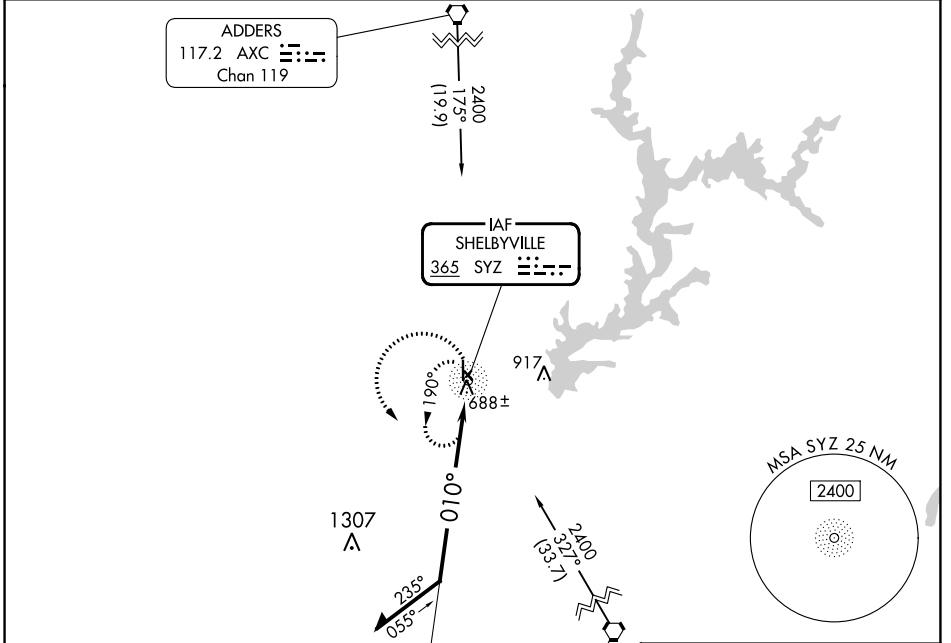
# NDB-A

SHELBY COUNTY (2H(0))

**NA** Circling Rwy 36 NA at night. Circling NA to Rwy 4, 14, 22, and 32. Use Decatur altimeter setting, when not received use Mattoon/Charleston altimeter setting and increase all MDAs 20 feet and Cat C visibility 1/4 SM.

**MISSED APPROACH:** Climbing left turn to 2400 in SYZ NDB holding pattern.

DEC ASOS <b>126.35</b>	KANSAS CITY CENTER <b>124.3 269.15</b>	UNICOM <b>122.8 (CTAF) 0</b>
---------------------------	---	---------------------------------



CATEGORY	A	B	C	D
<b>CIRCLING</b>	1280-1	661 (700-1)	1340-2 721 (800-2)	NA

EC-3, 26 DEC 2024 to 23 JAN 2025

EC-3, 26 DEC 2024 to 23 JAN 2025