

| | | | |
|--|------------------------|-----------------------------|---|
| WAAS CH 58235 W02A | APP CRS 020° | Rwy Idg TDZE Apt Elev | 5500 957 969 |
|--|------------------------|-----------------------------|---|

RNAV (GPS) RWY 2

CULLMAN RGNL/FOLSOM FLD (CMD)

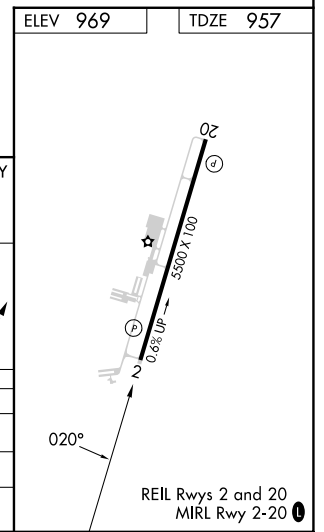
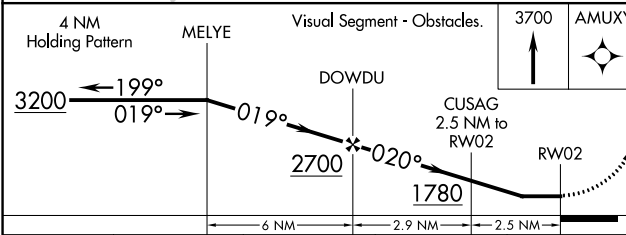
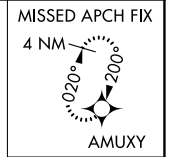
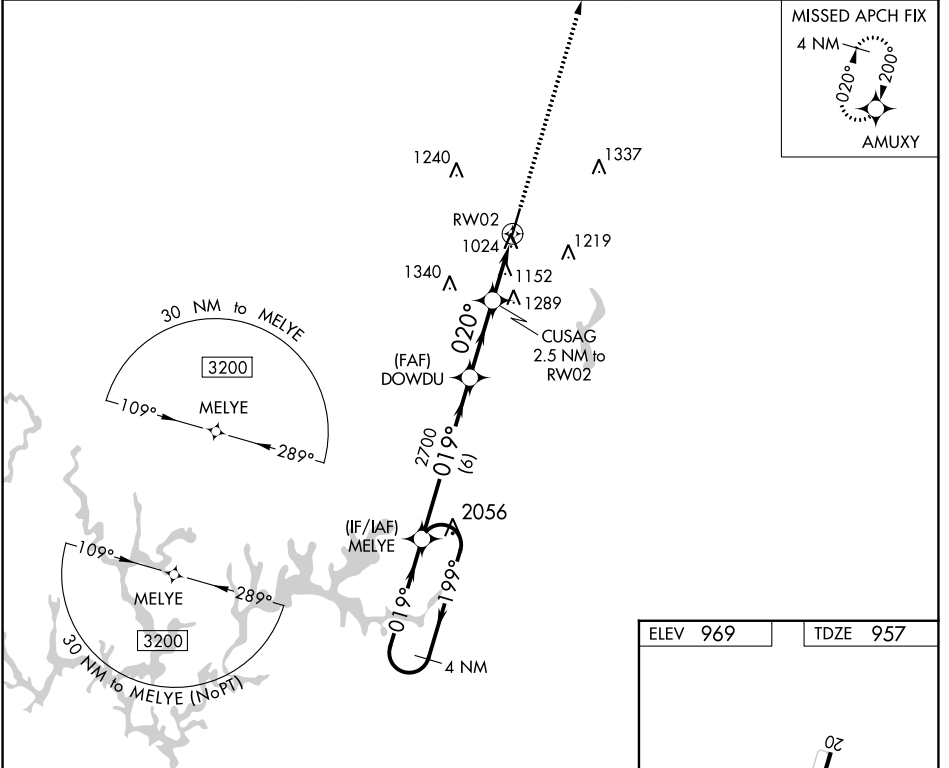
⚠ DME/DME RNP-0.3 NA. When local altimeter setting not received, use Huntsville Intl-Carl T Jones Fld altimeter setting and increase all MDA 100 feet, and increase LP, LNAV Cat C and D visibility $\frac{3}{8}$ SM, increase Circling Cat C and D visibility $\frac{1}{4}$ SM. Rwy 2 helicopter visibility reduction below 1 SM NA. Straight-in and Circling Rwy 2 NA at night.

MISSED APPROACH:
Climb to 3700 direct AMUXY and hold.

AWOS-3PT
124.175

HUNTSVILLE APP CON★
118.05 239.0

UNICOM
122.8 (CTAF) 0



| CATEGORY | A | B | C | D |
|-------------------|-----------------------|-----------------------|--|--|
| LP MDA | 1420-1 463 (500-1) | | 1420-1 $\frac{3}{8}$ 463 (500-1 $\frac{3}{8}$) | |
| LNAV MDA | 1440-1 483 (500-1) | | 1440-1 $\frac{3}{8}$ 483 (500-1 $\frac{3}{8}$) | |
| C CIRCLING | 1440-1 471 (500-1) | 1500-1 531 (600-1) | 1600-1 $\frac{3}{4}$ 631 (700-1 $\frac{3}{4}$) | 1640-2 $\frac{1}{4}$ 671 (700-2 $\frac{1}{4}$) |

SE-4, 26 DEC 2024 to 23 JAN 2025

SE-4, 26 DEC 2024 to 23 JAN 2025