

WAAS CH <b>50332</b> <b>W10A</b>	APP CRS <b>102°</b>	Rwy Idg <b>5004</b> TDZE <b>259</b> Apt Elev <b>259</b>
----------------------------------------	------------------------	---------------------------------------------------------------

# RNAV (GPS) RWY 10

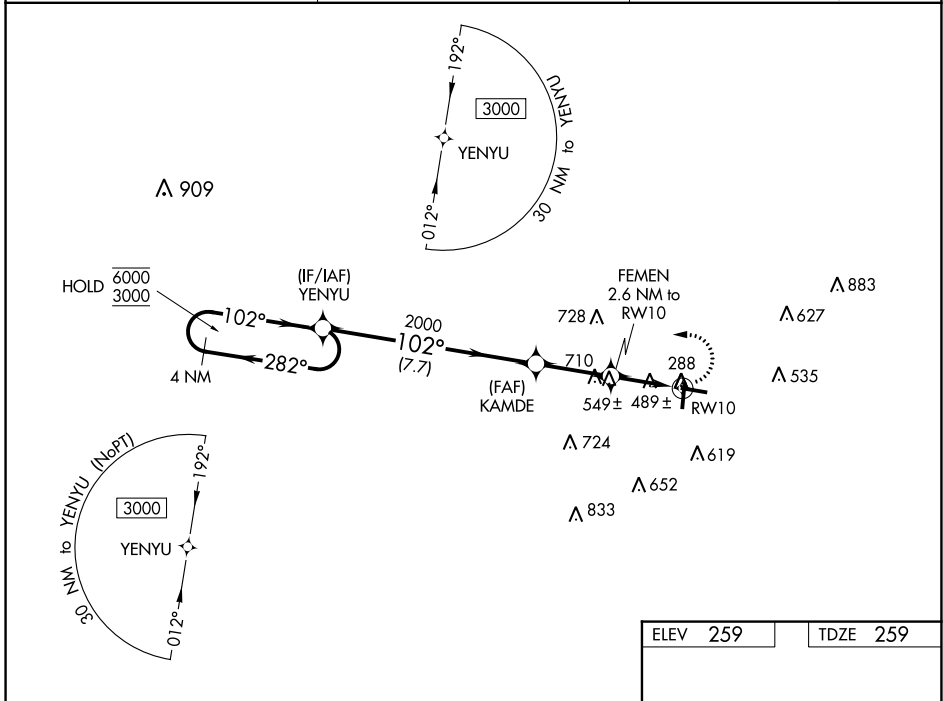
EVERGREEN RGNL/MIDDLETON FLD (GZH)

RNP APCH.

▼ Rwy 10 helicopter visibility reduction below 1 SM NA. When local altimeter setting not received, use  
 ▲ Andalusia/Opp altimeter setting and increase all MDA's 100 feet, and visibility LP Cat C/D 3/8 SM, LNAV Cat C/D 1/4 SM, Circling Cat C 1/2 SM and Circling Cat D 1/4 SM. Straight-in Rwy 10 NA at night, Circling Rwy 10, 19 NA at night.

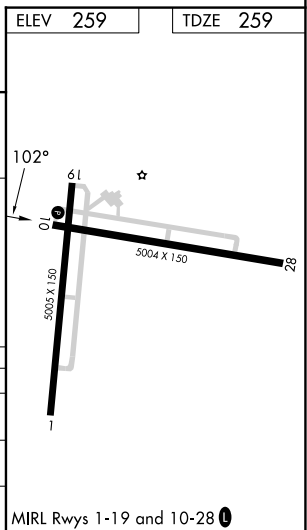
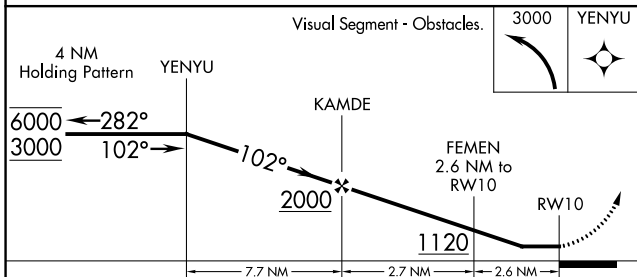
MISSED APPROACH:  
 Climbing left turn to 3000 direct YENYU and hold.

ASOS <b>133.425</b>	JACKSONVILLE CENTER <b>134.15 338.3</b>	UNICOM <b>122.7 (CTAF)</b>
------------------------	--------------------------------------------	-------------------------------



SE-4, 26 DEC 2024 to 23 JAN 2025

SE-4, 26 DEC 2024 to 23 JAN 2025



CATEGORY	A	B	C	D
LP MDA	740-1	481 (500-1)	740-1 3/8	481 (500-1 3/8)
LNAV MDA	800-1	541 (600-1)	800-1 5/8	541 (600-1 5/8)
<b>C</b> CIRCLING	800-1 541 (600-1)	840-1 581 (600-1)	980-2 721 (800-2)	1080-2 3/4 821 (900-2 3/4)

MIRL Rwy's 1-19 and 10-28