

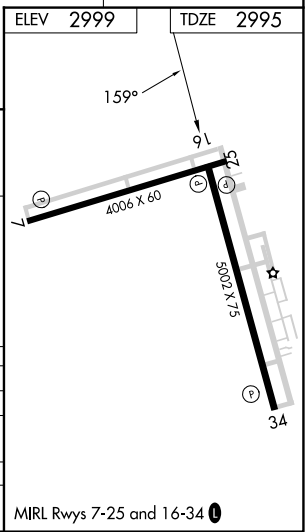
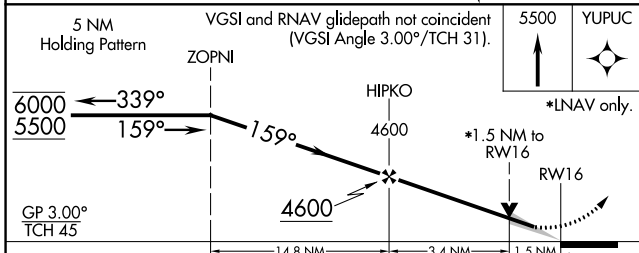
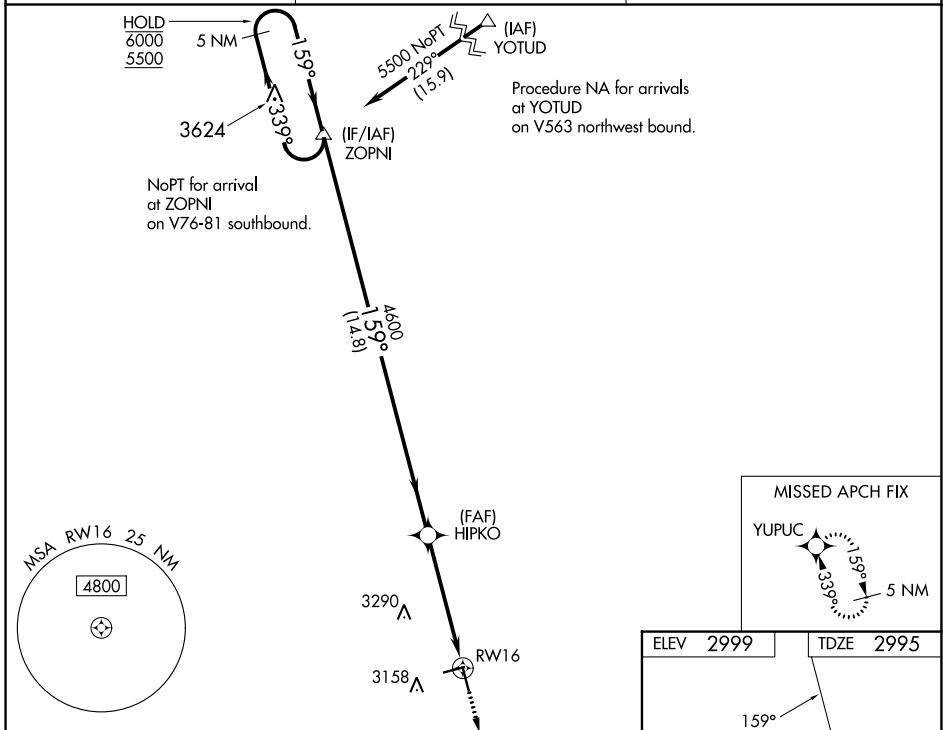
WAAS CH <b>70726</b> <b>W16A</b>	APP CRS <b>159°</b>	Rwy Idg TDZE Apf Elev	<b>5002</b> <b>2995</b> <b>2999</b>
--	------------------------	-----------------------------	---

# RNAV (GPS) RWY 16

LAMESA MUNI (LUV)

RNP APCH.	MISSED APPROACH: Climb to 5500 direct YUPUC and hold.
<p><b>▲</b> Circling Rwy 7, 25 NA at night. For uncompensated Baro-VNAV systems, LNAV/VNAV NA below -20°C or above 54°C.</p>	

AWOS-3PT <b>124.175</b>	FORT WORTH CENTER <b>132.6 269.05</b>	UNICOM <b>122.8 (CTAF) 0</b>
----------------------------	--	---------------------------------



CATEGORY	A	B	C	D
LPV DA		3245-3/4	250 (300-3/4)	
LNAV/VNAV DA		3245-3/4	250 (300-3/4)	
LNAV MDA	3500-1	505 (600-1)	3500-1 3/8	505 (600-1 1/8)
<b>C</b> CIRCLING	3500-1	501 (600-1)	3700-2 701 (800-2)	3840-2 3/4 841 (900-2 3/4)

SC-2, 26 DEC 2024 to 23 JAN 2025

SC-2, 26 DEC 2024 to 23 JAN 2025