

APP CRS	Rwy Idg	<b>3500</b>
<b>084°</b>	TDZE	<b>162</b>
	Apt Elev	<b>162</b>

# RNAV (GPS) RWY 9

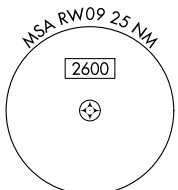
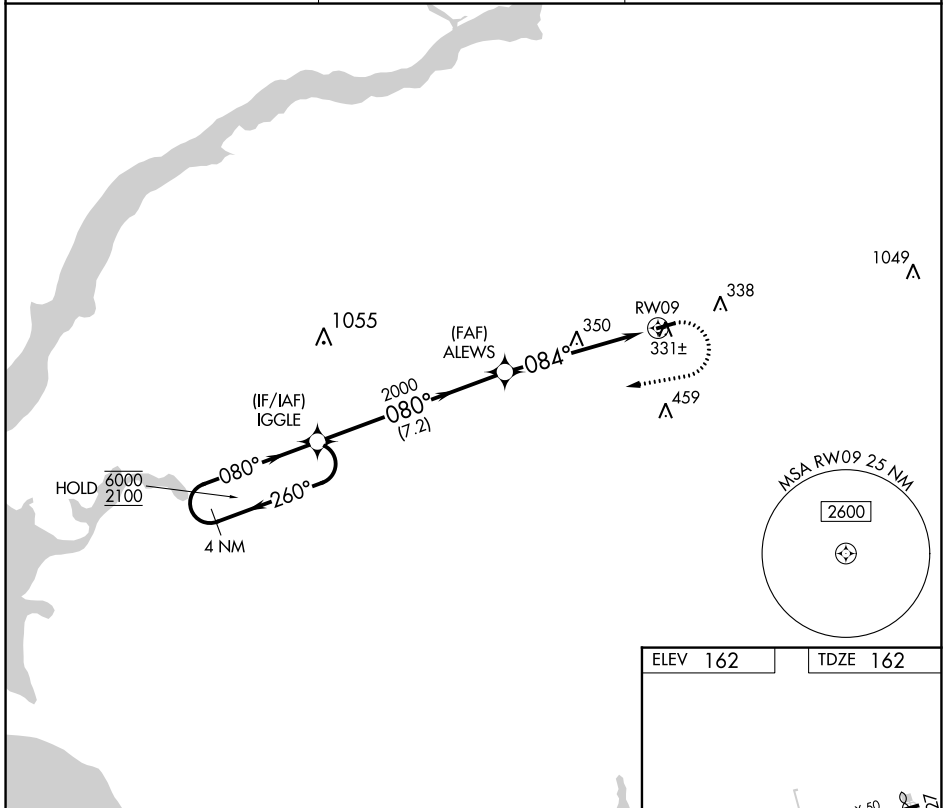
CROSS KEYS (17N)

RNP APCH - GPS.

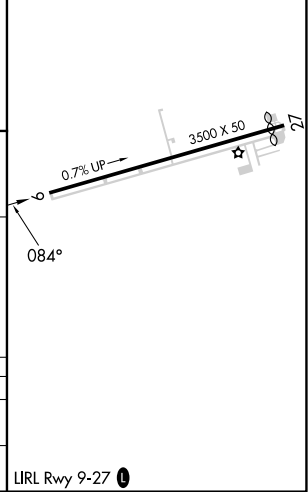
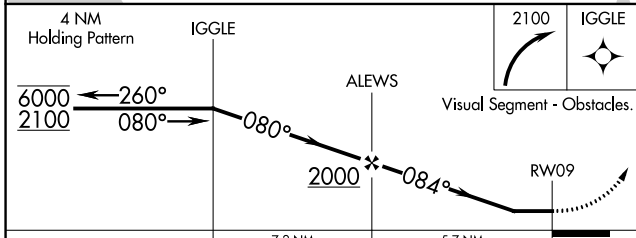
**▼** Procedure NA at night. Rwy 9 helicopter visibility reduction below 1 SM NA.  
**▲** NA Use Philadelphia Intl altimeter setting.

MISSED APPROACH: Climbing right turn to 2100 direct IGGLE and hold.

PHL ASOS <b>133.4</b>	PHILADELPHIA APP CON <b>127.35 133.875 317.55</b>	UNICOM <b>122.8 (CTAF) 0</b>
--------------------------	--	---------------------------------



ELEV 162	TDZE 162
----------	----------



CATEGORY	A	B	C	D
LNVA MDA	760-1	598 (600-1)	NA	
CIRCLING	760-1 598 (600-1)	820-1 658 (700-1)	NA	

LIRL Rwy 9-27 0

NE-2, 26 DEC 2024 to 23 JAN 2025

NE-2, 26 DEC 2024 to 23 JAN 2025