

WAAS CH 40306 W36A	APP CRS 004°	Rwy Idg 5002 TDZE 829 Apt Elev 842
--	------------------------	---

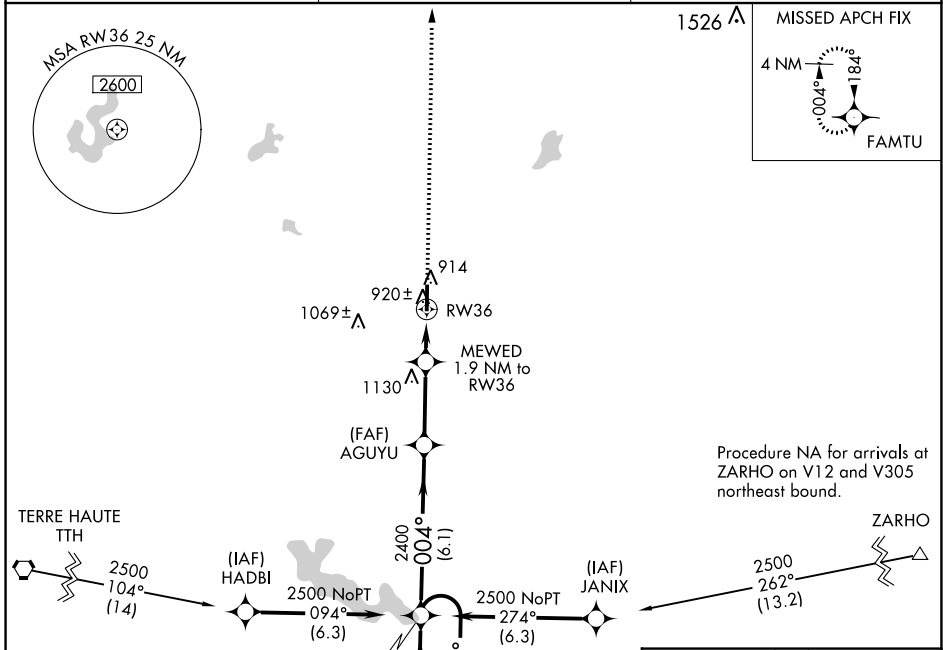
RNAV (GPS) RWY 36

PUTNAM COUNTY RGNL (GPC)

For uncompensated Baro-VNAV systems, LNAV/VNAV NA below -16°C (4°F) or above 54°C (130°F). DME/DME RNP-0.3 NA.

MISSED APPROACH: Climb to 2500 direct FAMTU and hold.

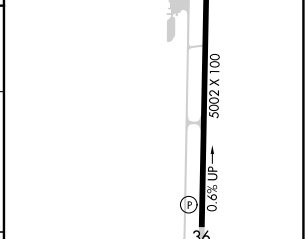
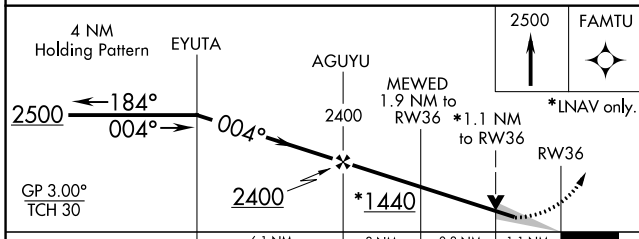
AWOS-3PT 118.125	INDIANAPOLIS APP CON 119.05 317.8	UNICOM 122.8 (CTAF)
----------------------------	---	-------------------------------



Procedure NA for arrival on TTH VORTAC airway radials 062 CW 189.

Procedure NA for arrivals at ZARHO on V12 and V305 northeast bound.

ELEV 842	TDZE 829
----------	----------



CATEGORY	A	B	C	D
LPV DA		1079-7/8	250 (300-7/8)	
LNAV/VNAV DA		1116-1	287 (300-1)	
LNAV MDA		1180-1	351 (400-1)	
CIRCLING	1280-1 438 (500-1)	1400-1 558 (600-1)	1480-1 3/4 638 (700-1 3/4)	1480-2 638 (700-2)

MIRL Rwy 18-36
REIL Rwy 18

EC-2, 26 DEC 2024 to 23 JAN 2025

EC-2, 26 DEC 2024 to 23 JAN 2025