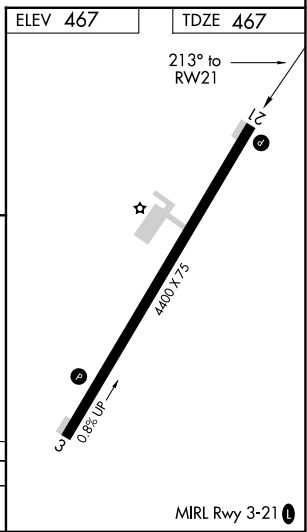
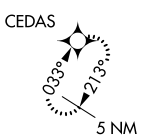
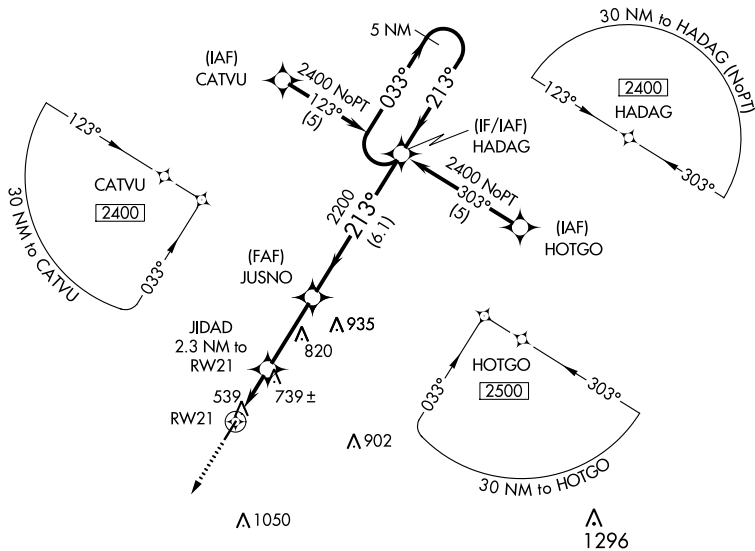


APP CRS	Rwy Idg	4400
213°	TDZE	467
	Apt Elev	467

RNAV (GPS) RWY 21

RIPLEY (25M)

RNP APCH.		MISSED APPROACH: Climb to 2500 direct CEDAS and hold.
<p>▼ Use Corinth altimeter setting; when not received, use Tupelo altimeter setting and increase all MDA 40 feet, and increase LNAV Cat C visibility 1/4 mile. Procedure NA at night. Rwy 21 helicopter visibility reduction below 1 SM NA.</p> <p>▲ NA</p>		
CRX AWOS-3PT 118.675	MEMPHIS CENTER 135.9 260.6	UNICOM 122.8 (CTAF) 0



2500	CEDAS	VGSI and descent angles not coincident. (VGSI Angle 3.50/TCH 16)		5 NM Holding Pattern
		JIDAD 2.3 NM to RWY 21	JUSNO	HADAG
		≤ 3.04° TCH 40	2200	2400
		1220		
		2.3 NM	2.9 NM	6.1 NM
CATEGORY	A	B	C	D
LNAV MDA	1060-1	593 (600-1)	1060-1½ 593 (600-1½)	NA

SC-4, 26 DEC 2024 to 23 JAN 2025

SC-4, 26 DEC 2024 to 23 JAN 2025