

RIPLEY, MISSISSIPPI

AL-6339 (FAA)

21252

VORTAC HLI <b>112.4</b> Chan <b>71</b>	APP CRS <b>094°</b>	Rwy Idg TDZE Apt Elev <b>467</b>	<b>N/A</b> <b>N/A</b> <b>467</b>
--	------------------------	---	--

**VOR/DME-A**  
RIPLEY (25M)

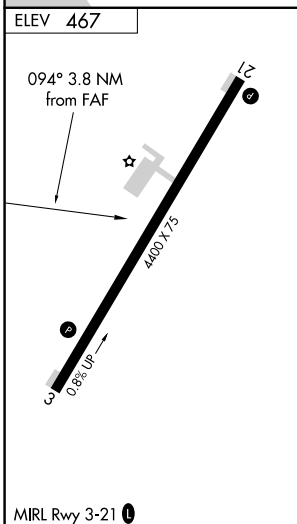
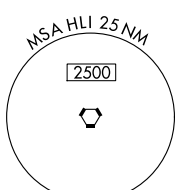
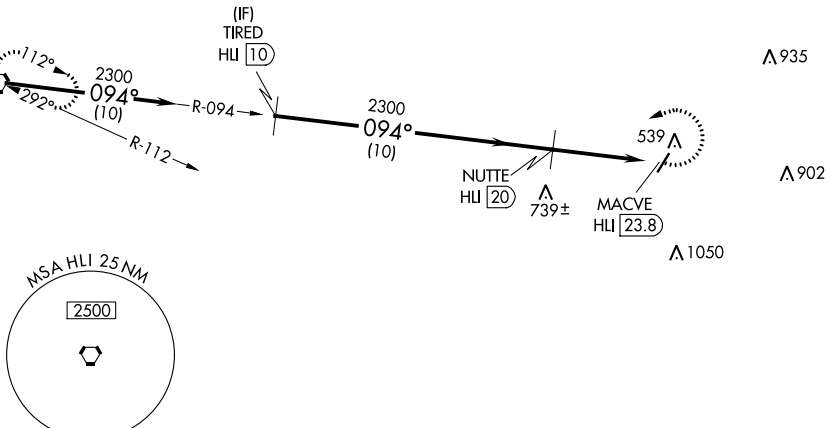
**▼** Use Corinth altimeter setting; when not received, use Tupelo altimeter setting and increase all MDAs 40 feet, and visibility Cat C ¼ SM.  
**▲ NA** Procedure NA at night. Helicopter visibility reduction below 1 SM NA.

MISSED APPROACH: Climbing left turn to 3000 via heading 251° and HLI VORTAC R-094 to HLI VORTAC and hold.

CRX AWOS-3PT <b>118.675</b>	MEMPHIS CENTER <b>135.9 260.6</b>	UNICOM <b>122.8 (CTAF) ①</b>
--------------------------------	--------------------------------------	---------------------------------

Procedure NA for arrivals on HLI VORTAC  
airway radials 045 CW 112.

IAF  
HOLLY SPRINGS  
112.4 HLI [112.4]  
Chan 71



	HLI VORTAC	TIED HLI 10	NUTTE HLI 20	MACVE HLI 23.8
	2300	2300	2300	3000
	094°	094°	094°	hdg 251°
	10 NM	10 NM	3.8 NM	HLI R-094
CATEGORY	A	B	C	D
CIRCLING	1060-1 593 (600-1)	1100-1¼ 633 (700-1¼)	1120-1¾ 653 (700-1¾)	1420-3 953 (1000-3)

RIPLEY, MISSISSIPPI  
Amdt 2B 09SEP21

34°43'N-89°01'W

RIPLEY (25M)  
**VOR/DME-A**

SC-4, 26 DEC 2024 to 23 JAN 2025

SC-4, 26 DEC 2024 to 23 JAN 2025