

# RNAV (GPS) RWY 6

APCH CRS	Rwy Idg	6043
063°	TDZE	387
	Arprt Elev	433

AL-6341 [USA]

LAGUNA AAF (KLGf)

RNP APCH - GPS

RADAR required for holding.

▼ Procedure not authorized when airfield closed.  
 \* Straight-in Minimums not authorized at night.  
 \*\* Circling not authorized NW of Rws 6 and 18.  
 Circling to Rwy 24 not authorized at night.

MISSED APPROACH: Climbing right turn to 3600 direct BZA VORTAC and hold.

▲ NA

YUMA APP CON  
**124.7 371.975**

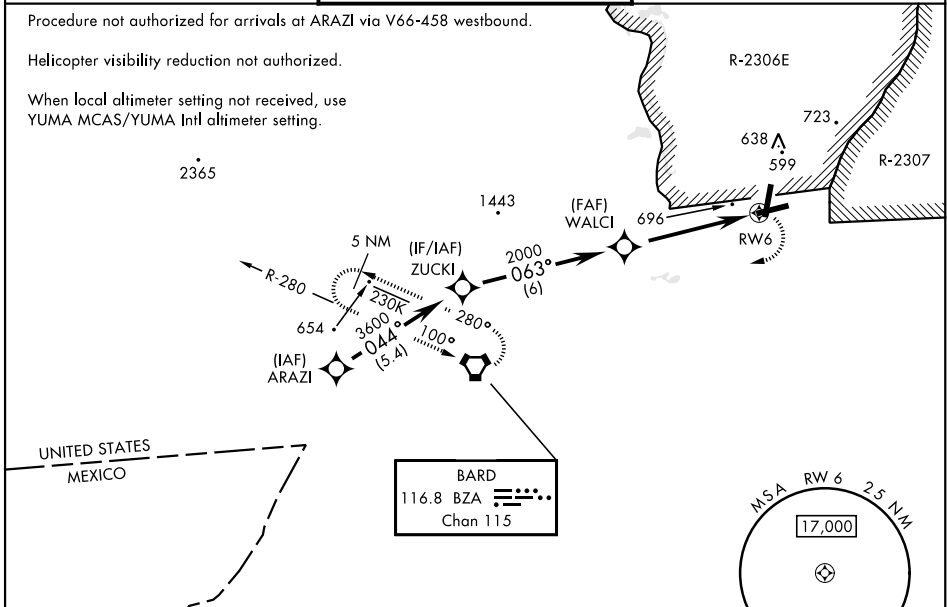
TOWER ★  
**126.2 (CTAF) 242.175**

GND CON  
**121.8 0 229.4**

Procedure not authorized for arrivals at ARAZI via V66-458 westbound.

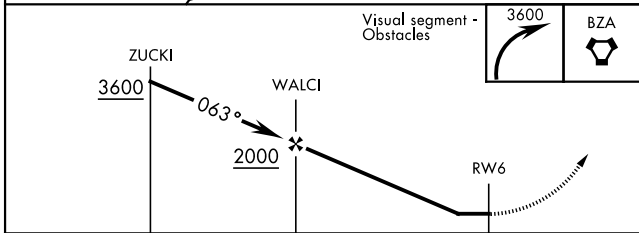
Helicopter visibility reduction not authorized.

When local altimeter setting not received, use YUMA MCAS/YUMA Intl altimeter setting.



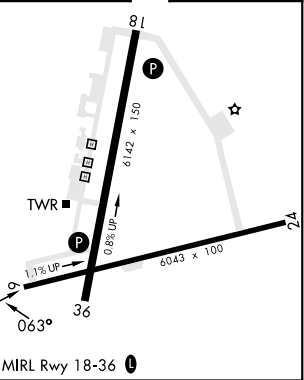
SW-4, 26 DEC 2024 to 23 JAN 2025

SW-4, 26 DEC 2024 to 23 JAN 2025



ELEV 433	TDZE 387
----------	----------

CATEGORY	A	B	C	D
LNNAV MDA*	1020-1 633 (600-1)	1020-1¾ 633 (600-1¾)		
CIRCLING**	1080-1 647 (700-1)	1080-1¾ 647 (700-1¾)	1080-2 647 (700-2)	
YUMA MCAS/YUMA Intl ALTIMETER SETTING				
LNNAV MDA*	1100-1 713 (700-1)	1100-2 713 (700-2)		
CIRCLING**	1160-1 727 (800-1)	1160-2 727 (800-2)	1160-2¼ 727 (800-2¼)	



# RNAV (GPS) RWY 6