

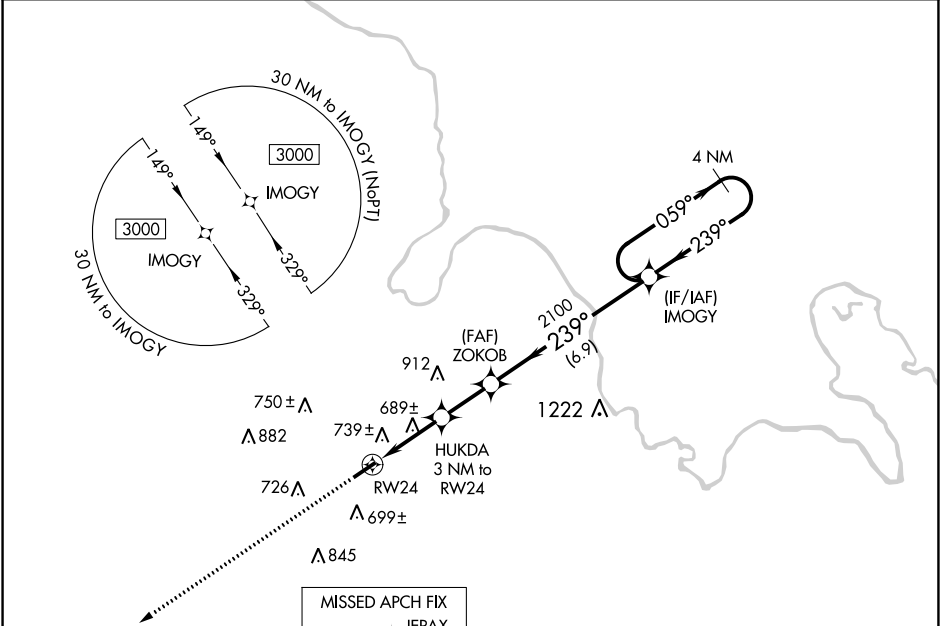
WAAS CH <b>99627</b> <b>W24A</b>	APP CRS <b>239°</b>	Rwy Idg <b>4600</b> TDZE <b>425</b> Apt Elev <b>428</b>
--	------------------------	---

# RNAV (GPS) RWY 24

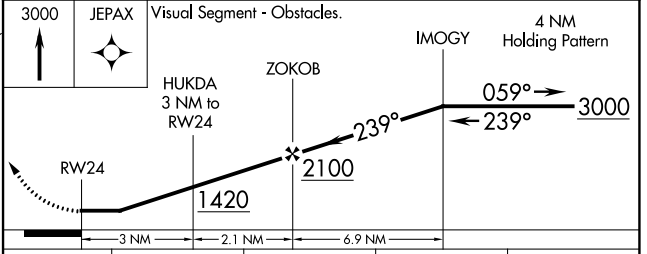
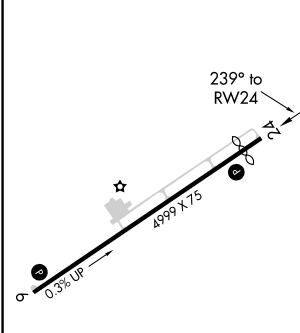
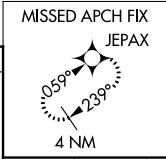
MUHLENBERG COUNTY (M21)

RNP APCH - GPS.	When local altimeter setting not received, use Owensboro altimeter setting and increase all MDAs 80 feet. Increase LP Cats C/D visibility 3/8 SM and LNAV Cats C/D and Circling Cats C/D visibility 1/4 SM. Procedure NA at night. Rwy 24, helicopter visibility reduction below 1 SM NA.	MISSED APPROACH: Climb to 3000 direct JEPAX and hold.
-----------------	---	--

AWOS-3 <b>120.45</b>	CAMPBELL APP CON ★ <b>118.1 269.525</b>	UNICOM <b>123.0 (CTAF)</b>
-------------------------	--	-------------------------------



ELEV 428	<b>D</b>	TDZE 425
----------	----------	----------



CATEGORY	A	B	C	D
LP MDA	940-1	515 (600-1)	940-1 <sup>3</sup> / <sub>8</sub>	515 (600-1 <sup>3</sup> / <sub>8</sub> )
LNAV MDA	1000-1	575 (600-1)	1000-1 <sup>5</sup> / <sub>8</sub>	575 (600-1 <sup>5</sup> / <sub>8</sub> )
<b>C</b> CIRCLING	1040-1 612 (700-1)	1100-1 672 (700-1)	1180-2 <sup>1</sup> / <sub>4</sub> 752 (800-2 <sup>1</sup> / <sub>4</sub> )	1200-2 <sup>1</sup> / <sub>2</sub> 772 (800-2 <sup>1</sup> / <sub>2</sub> )

MIRL Rwy 6-24 **1**  
REIL Rwy 6 and 24 **1**

GREENVILLE, KENTUCKY  
Amdt 1E 11AUG22

37°14'N-87°09'W

# RNAV (GPS) RWY 24

SE-1, 26 DEC 2024 to 23 JAN 2025

SE-1, 26 DEC 2024 to 23 JAN 2025