

| | | |
|-------------|----------|-------------|
| APP CRS | Rwy Idg | 4482 |
| 256° | TDZE | 88 |
| | Apt Elev | 88 |

RNAV (GPS) RWY 25

LOMPOC (LPC)

RNP APCH.

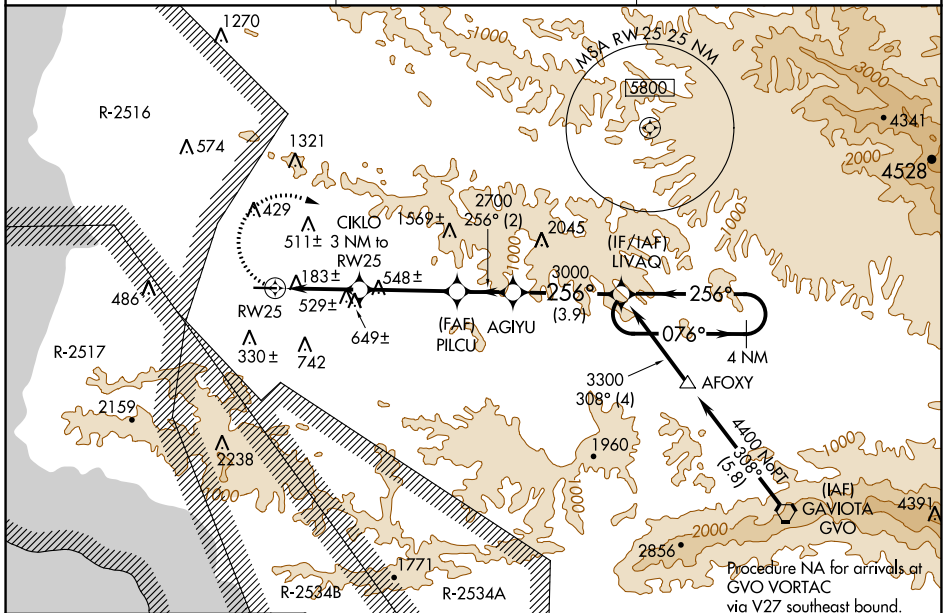
▼ When local altimeter setting not received, use Santa Maria Pub/Capt G Allan Hancock Fld altimeter setting and increase all MDA 60 feet, and increase LNAV and Circling Cat B visibility ¼ SM. Procedure NA at night.

MISSED APPROACH: Climbing right turn to 3300 direct LIVAQ and hold.

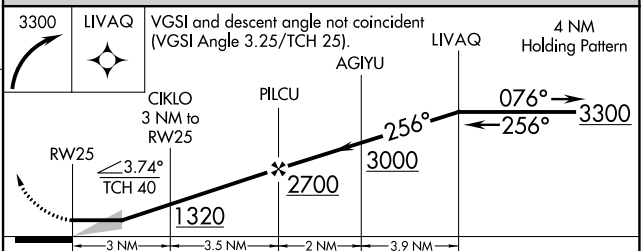
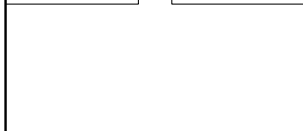
AWOS-3PT
133.875

SANTA BARBARA APP CON★
124.15 327.8

UNICOM
122.7 (CTAF) 0



ELEV 88 TDZE 88



| CATEGORY | A | B | C | D |
|----------|---------|---------------|---|----|
| LNAV MDA | 1000-1¼ | 912 (1000-1¼) | | NA |
| CIRCLING | 1000-1¼ | 912 (1000-1¼) | | NA |

REIL Rwy 25 0
MIRL Rwy 7-25 0

SW-3, 26 DEC 2024 to 23 JAN 2025

SW-3, 26 DEC 2024 to 23 JAN 2025