

VORTAC GGG <b>112.9</b> Chan 76	APP CRS <b>190°</b>	Rwy Idg TDZE Apt Elev <b>N/A</b> <b>N/A</b> <b>442</b>
---------------------------------------	------------------------	--

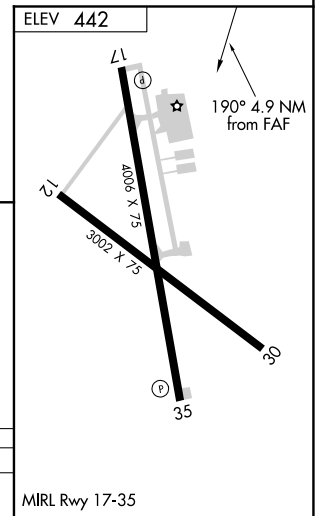
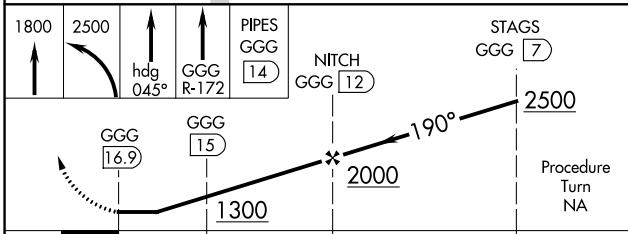
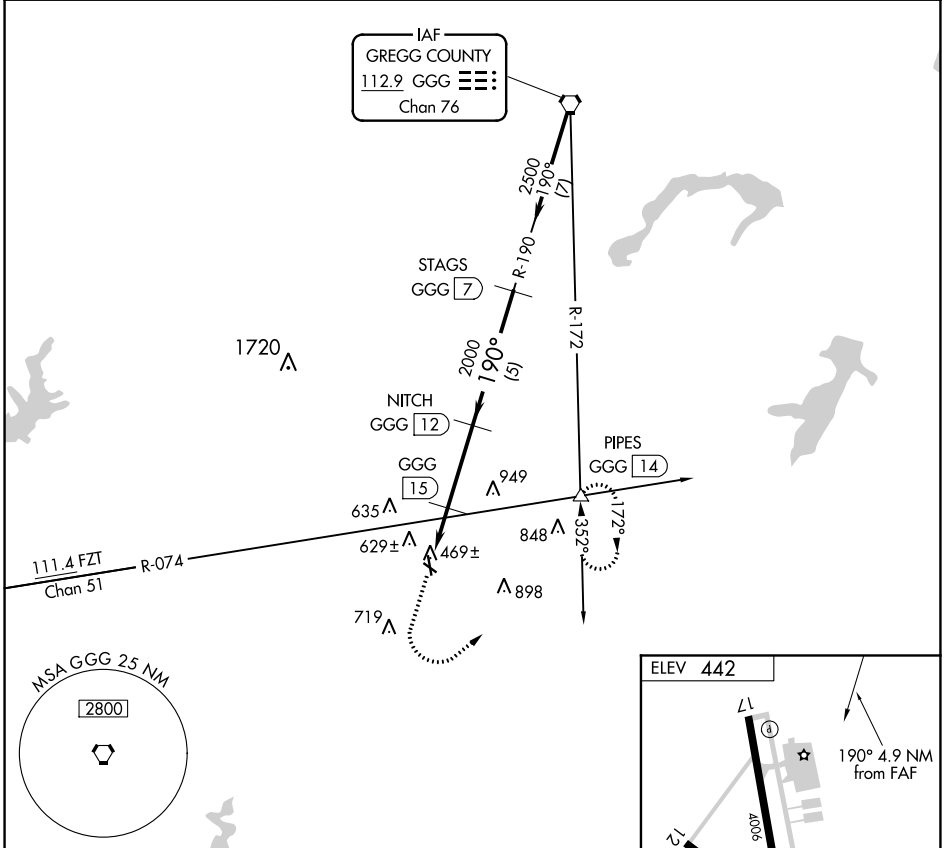
# VOR/DME-A

RUSK COUNTY (R.F.I)

**NA** When local altimeter setting not received, use Longview altimeter setting and increase all MDAs 60 feet and Circling Cat C visibility 1/4 SM. Circling Rwy 12, 17 and 30 NA at night.

MISSED APPROACH: Climb to 1800 then climbing left turn to 2500 via heading 045° and GGG R-172 to PIPES INT/14 DME and hold.

AWOS-3 <b>119.375</b>	LONGVIEW APP CON ★ <b>124.275 257.975</b>	UNICOM <b>122.8</b> (CTAF)
--------------------------	--	-------------------------------



CATEGORY	A	B	C	D
CIRCLING	1220-1 778 (800-1)	1220-1 1/4 778 (800-1 1/4)	1220-2 1/4 778 (800-2 1/4)	NA