

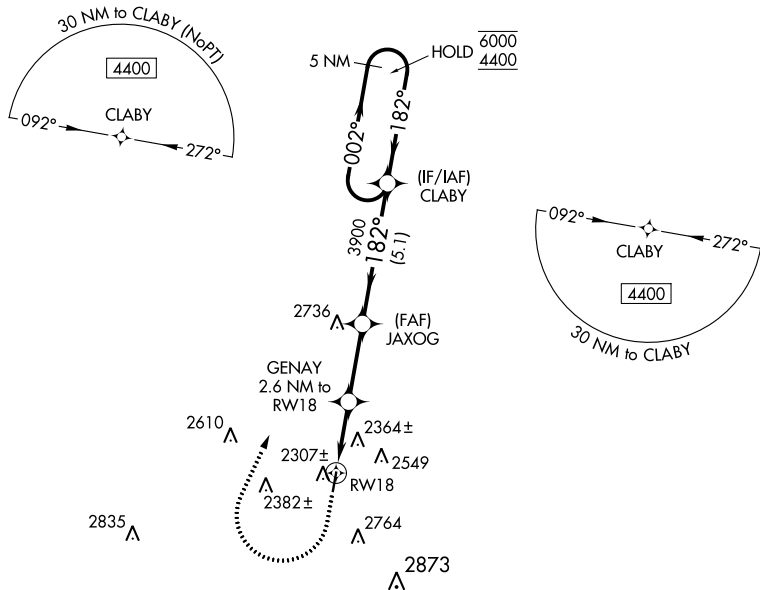
WAAS CH <b>72645</b> <b>W18A</b>	APP CRS <b>182°</b>	Rwy Idg TDZE <b>2140</b> Apt Elev <b>2140</b>	<b>3944</b>
--	------------------------	---	-------------

# RNAV (GPS) RWY 18

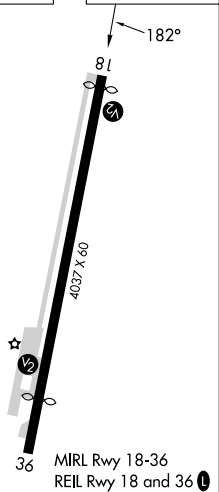
SONORA MUNI (SOA)

RNP APCH-GPS.	MISSED APPROACH: Climb to 2700 then climbing right turn to 4400 direct CLABY and hold.
---------------	--

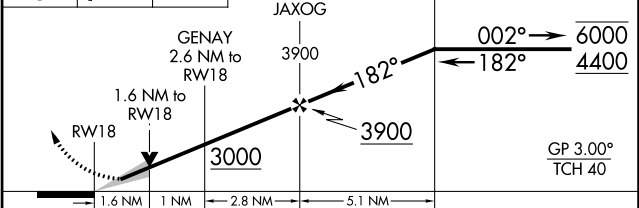
AWOS-3 <b>118.075</b>	HOUSTON CENTER <b>125.75 346.4</b>	UNICOM <b>122.8 (CTAF) 0</b>
--------------------------	---------------------------------------	---------------------------------



ELEV <b>2140</b>	TDZE <b>2140</b>
------------------	------------------



2700	4400	CLABY	VGSI and RNAV glidepath not coincident (VGSI Angle 3.00/TCH 25).
------	------	-------	--



CATEGORY	A	B	C	D
LPV DA	2425-1	285 (300-1)		NA
LNAV/VNAV DA	2691-1 $\frac{5}{8}$	551 (600-1 $\frac{5}{8}$ )		NA
LNAV MDA	2680-1	540 (600-1)		NA
<b>CIRCLING</b>	3040-1 $\frac{1}{4}$ 900 (900-1 $\frac{1}{4}$ )	3080-1 $\frac{1}{4}$ 940 (1000-1 $\frac{1}{4}$ )		NA

SC-3, 26 DEC 2024 to 23 JAN 2025

SC-3, 26 DEC 2024 to 23 JAN 2025