

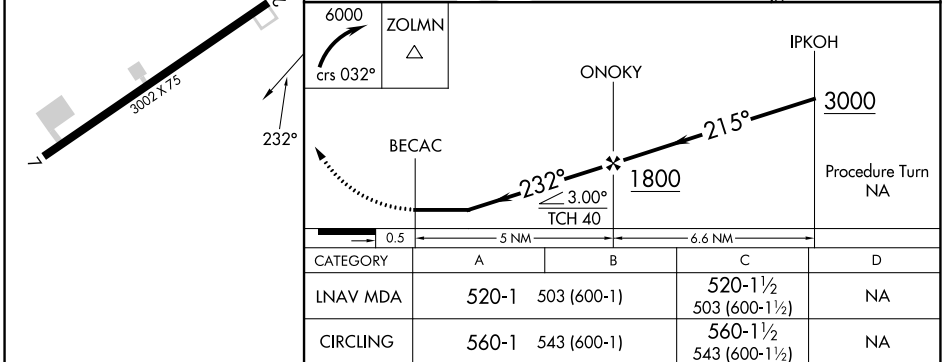
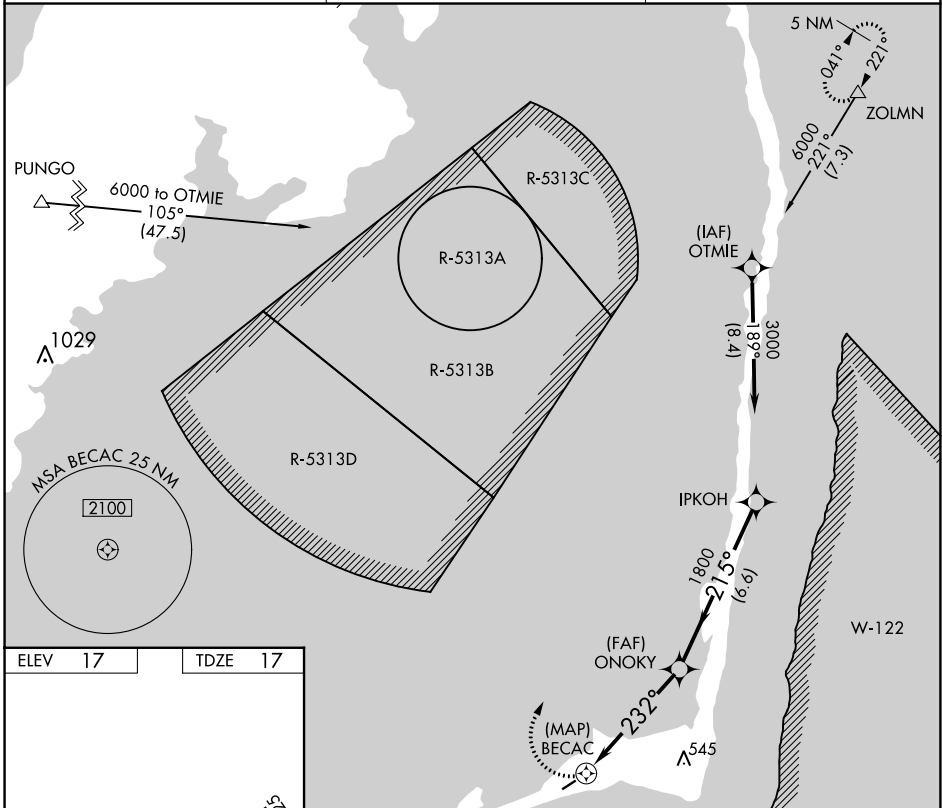
APP CRS <b>232°</b>	Rwy Idg <b>3002</b>
	TDZE <b>17</b>
	Apt Elev <b>17</b>

# RNAV (GPS) RWY 25

BILLY MITCHELL (HSE)

NA Procedure NA at night. GPS or RNP-0.3 required. DME/DME RNP-0.3 NA.	MISSED APPROACH: Climbing right turn to 6000 via course 032° to ZOLMN WP and hold.
---	---

ASOS <b>118.375</b>	CHERRY POINT APP CON <b>119.75 360.775</b>	CTAF <b>122.9</b>
------------------------	---	----------------------



HATTERAS, NORTH CAROLINA	BILLY MITCHELL (HSE)
Orig 300CT03	35°14'N-75°37'W
	<b>RNAV (GPS) RWY 25</b>

SE-2, 26 DEC 2024 to 23 JAN 2025

SE-2, 26 DEC 2024 to 23 JAN 2025