

NDB/DME DUT 283	APP CRS 171°	Rwy Idg TDZE Apt Elev	N/A N/A 22
Chan 86 (113.9)			

NDB-A

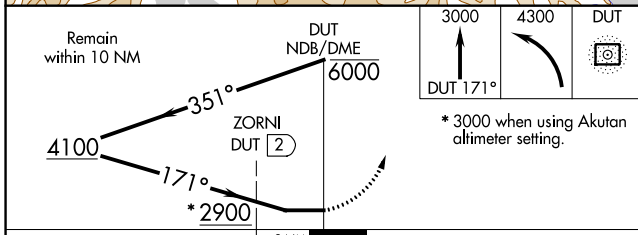
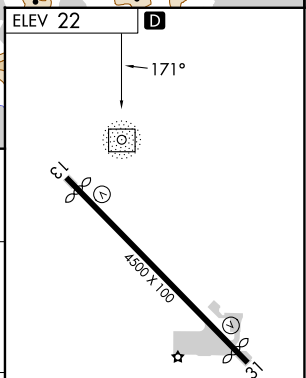
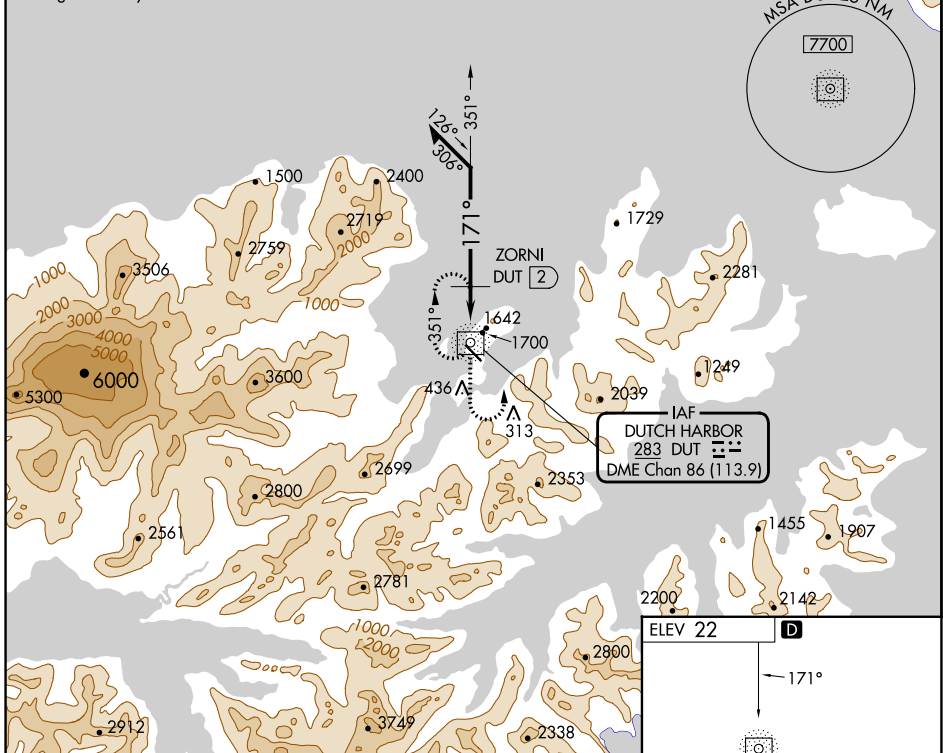
UNALASKA (DUT) (PADU)

⚠ Circling NA northeast of Rwy 13-31. Procedure NA at night. Helicopter visibility reduction below 1 SM NA. When local altimeter setting not received, use Akutan altimeter setting and increase all MDAs 100 feet. Descend to 6000 in holding pattern.

MISSED APPROACH: Climb to 3000 on DUT NDB/DME bearing 171° then climbing left turn to 4300 direct DUT NDB/DME and hold.

AWOS-3P 125.8	ANCHORAGE CENTER 121.4	CTAF 122.6 0*
-------------------------	----------------------------------	-------------------------

Strong winds may cause severe turbulence.



CATEGORY	A	B	C	D
C CIRCLING	2900-1¼ 2878 (2900-1¼)	2900-1½ 2878 (2900-1½)	2900-3	2878 (2900-3)
ZORNI FIX MINIMUMS (DME REQUIRED)				
C CIRCLING	2200-1¼ 2178 (2200-1¼)	2200-1½ 2178 (2200-1½)	2320-3 2298 (2300-3)	2500-3 2478 (2500-3)

MIRL Rwy 13-31 **0**
REIL Rwys 13 and 31 **0**