

VOR OZB 109.0	APP CRS 287°	Rwy Idg TDZE Apt Elev N/A N/A 2559
-------------------------	------------------------	--

VOR-A

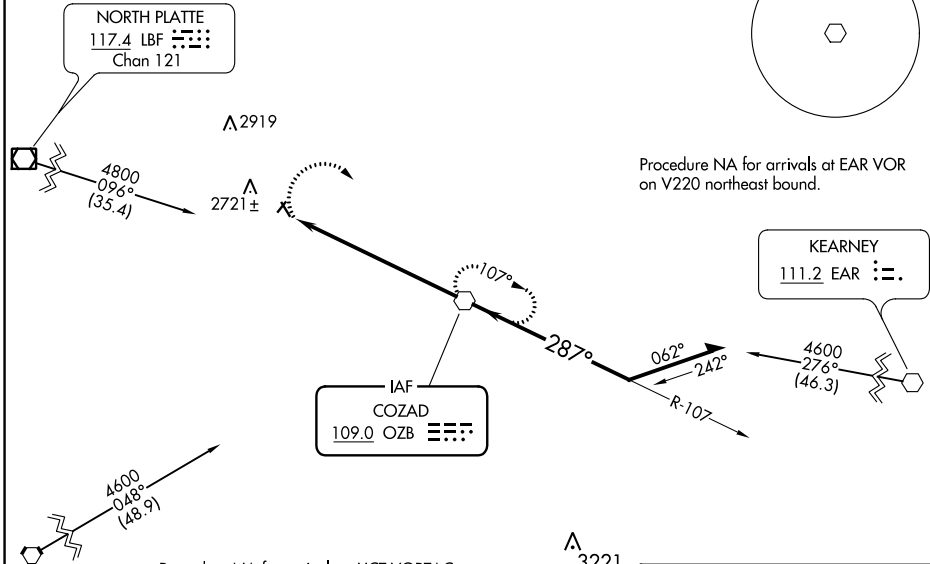
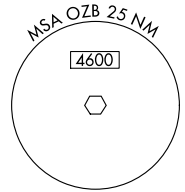
GOTHENBURG MUNI (GTE)

NA Circling NA to Rwys 14 and 32. Procedure NA at night. Use Lexington altimeter setting; when not received, use North Platte altimeter setting and increase all MDA 40 feet.

MISSED APPROACH: Climbing right turn to 4300 direct OZB VOR and hold.

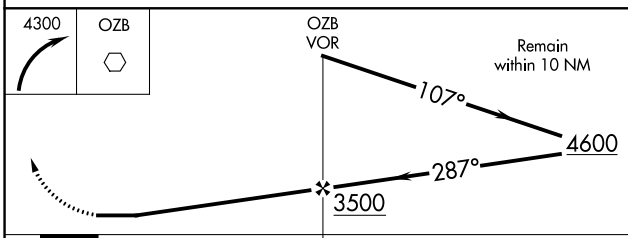
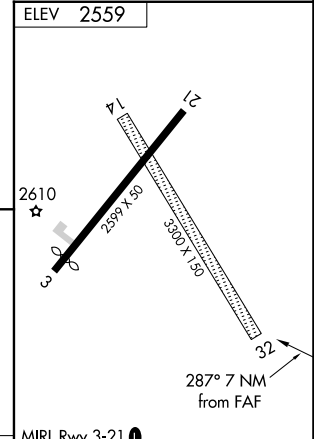
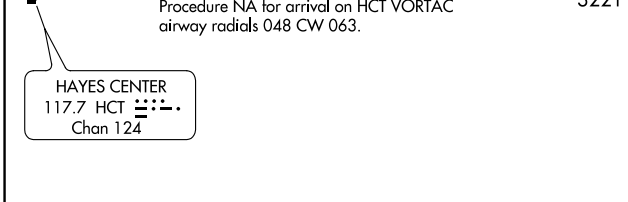
LXN AWOS-3 121.025	DENVER CENTER 132.7 226.675	UNICOM 122.8 (CTAF)
------------------------------	---------------------------------------	-------------------------------

Procedure NA for arrival on LBF VOR/DME airway radials 062 CW 080.



NC-2, 26 DEC 2024 to 23 JAN 2025

NC-2, 26 DEC 2024 to 23 JAN 2025



CATEGORY	A	B	C	D	FAF to MAP 7 NM					
	3120-1 561 (600-1)	3180-1 621 (700-1)	NA		Knots	60	90	120	150	180
CIRCLING					Min:Sec	7:00	4:40	3:30	2:48	2:20

VOR-A