

CLARKSVILLE, TENNESSEE

RNAV (GPS) X RWY 23

APCH CRS	Rwy Idg	5000
227°	TDZE	587
	Arprt Elev	595

AL-6373 (USA)

SABRE AAF (FORT CAMPBELL) (KEOD)

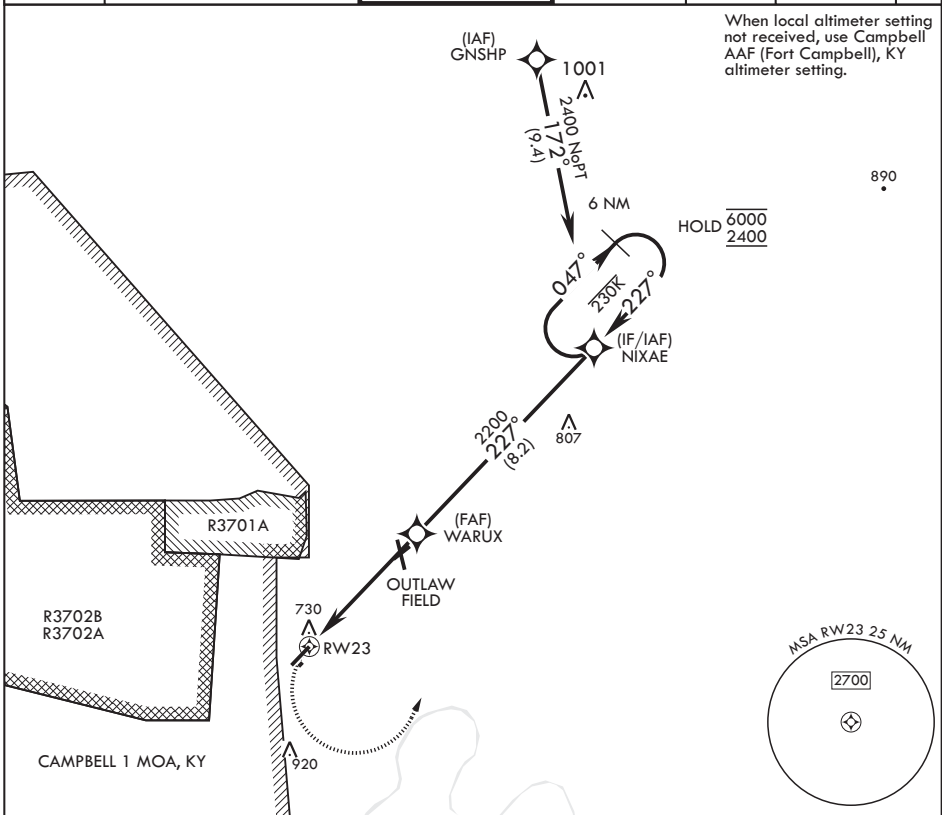
RNP APCH-GPS MISSED APPROACH: Climbing left turn to 2400 direct NIXAE and hold.

RADAR required

* Circling not authorized to Rwy 5R/23L.

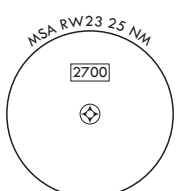
SABRE ATIS	CAMPBELL APP CON/DEP CON	TOWER *	GND CON	CLNC DEL	EAGLE RADIO	ASR
306.5	134.35 307.025	124.675 (CTAF) 290.45	142.975 267.3	237.6	285.7	

When local altimeter setting not received, use Campbell AAF (Fort Campbell), KY altimeter setting.

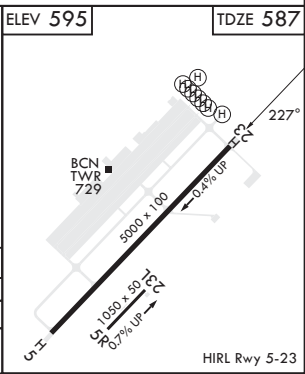
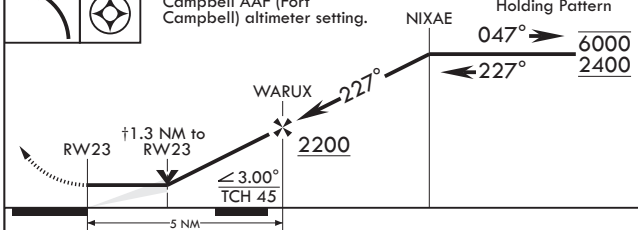


890

HOLD 6000 / 2400



2400	NIXAE	† VDP NA when using Campbell AAF (Fort Campbell) altimeter setting.	6 NM Holding Pattern	ELEV 595	TDZE 587
------	-------	---	----------------------	----------	----------



CATEGORY	A		B	C		D
LNAV MDA	1060-1	473	(500-1)	1060-1½	473	(500-1½)
CIRCLING*	1160-1	1240-1	1300-2	1300-2¼	705	(800-2¼)
	565 (600-1)	645 (700-1)	705 (800-2)	705 (800-2¼)		

CLARKSVILLE, TENNESSEE

36°34'N - 87°29'W

SABRE AAF (FORT CAMPBELL) (KEOD)

Amdt 1 07SEP23

RNAV (GPS) X RWY 23

SE-1, 26 DEC 2024 to 23 JAN 2025

SE-1, 26 DEC 2024 to 23 JAN 2025