

CLARKSVILLE, TENNESSEE

RNAV (GPS) X RWY 5

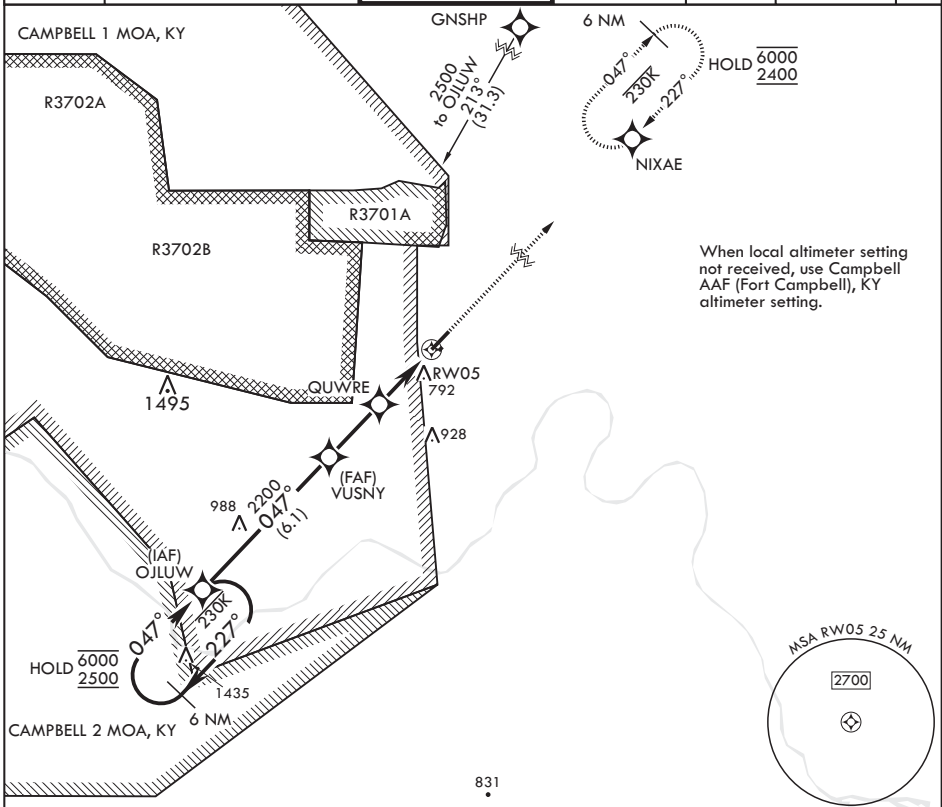
APCH CRS 047°	Rwy Idg TDZE Arprt Elev	5000 595 595
-------------------------	-------------------------------	---

AL-6373 (USA)

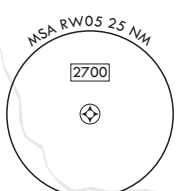
SABRE AAF (FORT CAMPBELL) (KEOD)

RNP APCH-GPS	MISSED APPROACH: Climb to 2400 direct NIXAE and hold.
RADAR required	
* Circling not authorized to Rwy 05R/23L.	

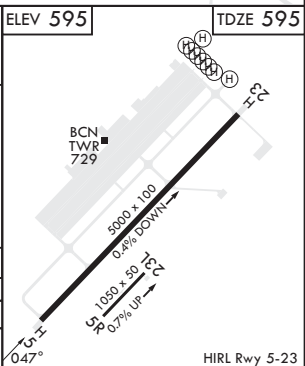
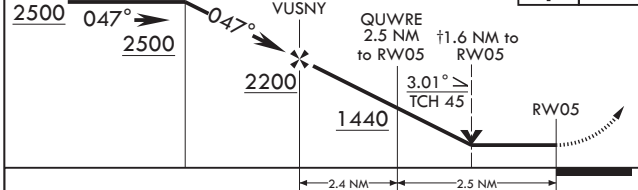
SABRE ATIS 306.5	CAMPBELL APP CON/DEP CON 134.35 307.025	TOWER * 124.675 290.45	GND CON 142.975 267.3	CLNC DEL 237.6	EAGLE RADIO 285.7	ASR
----------------------------	---	----------------------------------	---------------------------------	--------------------------	-----------------------------	-----



When local altimeter setting not received, use Campbell AAF (Fort Campbell), KY altimeter setting.



6 NM Holding Pattern OJLUW	† VDP NA when using Campbell AAF (Fort Campbell) altimeter setting.	2400 NIXAE	ELEV 595	TDZE 595
----------------------------	---	------------	----------	----------



CATEGORY	A	B	C	D
LNAV MDA	1180-1 585 (600-1)	1240-1 585 (600-1)	1300-1 585 (600-1)	1300-2 585 (600-1)
CIRCLING*	1180-1 585 (600-1)	1240-1 645 (700-1)	1300-2 705 (800-2)	1300-2 705 (800-2)

CLARKSVILLE, TENNESSEE 36°34'N - 87°29'W SABRE AAF (FORT CAMPBELL) (KEOD)

Amdt 1 10AUG23

RNAV (GPS) X RWY 5

SE-1, 26 DEC 2024 to 23 JAN 2025

SE-1, 26 DEC 2024 to 23 JAN 2025