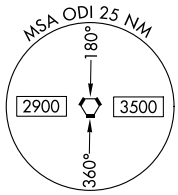


VORTAC ODI 117.9 Chan 126	APP CRS 184°	Rwy Idg TDZE Apt Elev 1179	N/A N/A 1179
---	------------------------	---	---

VOR-A
HOUSTON COUNTY (CHU)

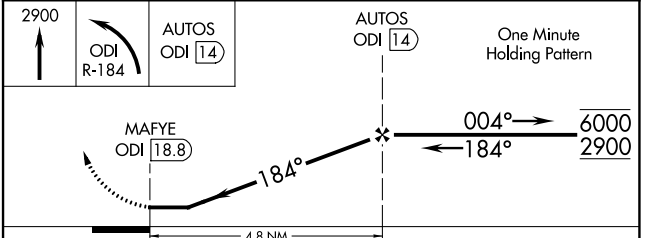
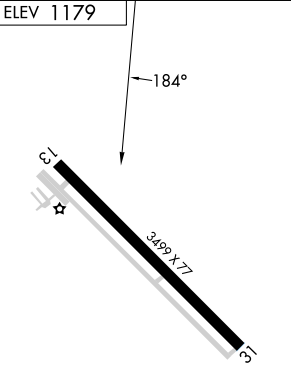
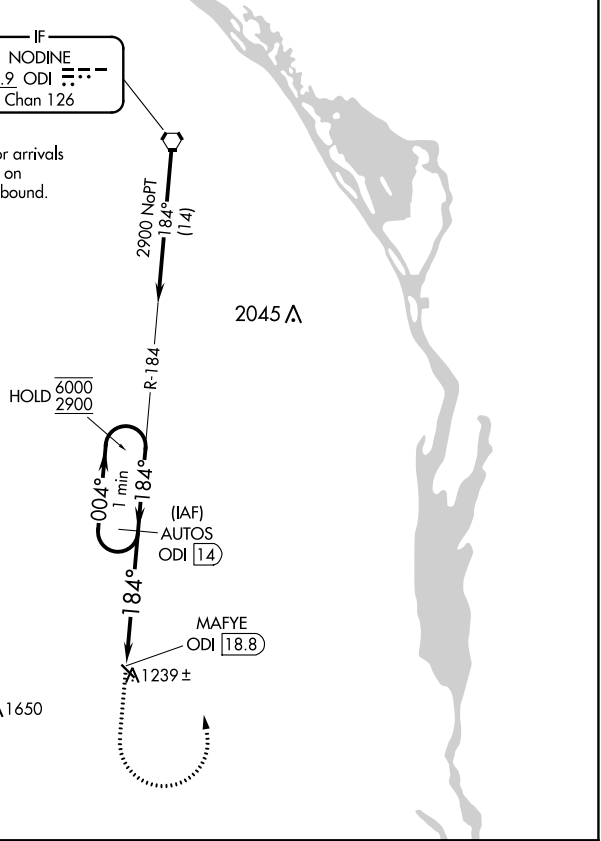
DME required.	Use La Crosse Rgnl altimeter setting. Procedure NA at night.	MISSED APPROACH: Climb to 2900 then left turn on ODI VORTAC R-184 to AUTOS/ODI 14 DME and hold.
▼ ▲ NA		

LSE ASOS 124.95	MINNEAPOLIS CENTER 128.6 363.0	CTAF 122.9 0
---------------------------	--	------------------------



IF
NODINE
117.9 ODI
Chan **126**

Procedure NA for arrivals
at ODI VORTAC on
V129 northwest bound.



CATEGORY	A	B	C	D
CIRCLING	1820-1	641 (700-1)	NA	

NC-1, 26 DEC 2024 to 23 JAN 2025

NC-1, 26 DEC 2024 to 23 JAN 2025