

APP CRS	Rwy Idg	<b>4498</b>
<b>095°</b>	TDZE	<b>161</b>
	Apt Elev	<b>160</b>

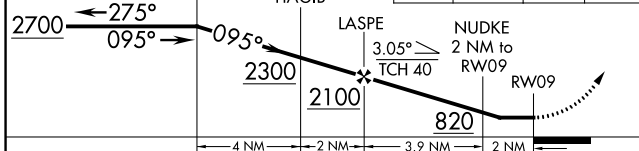
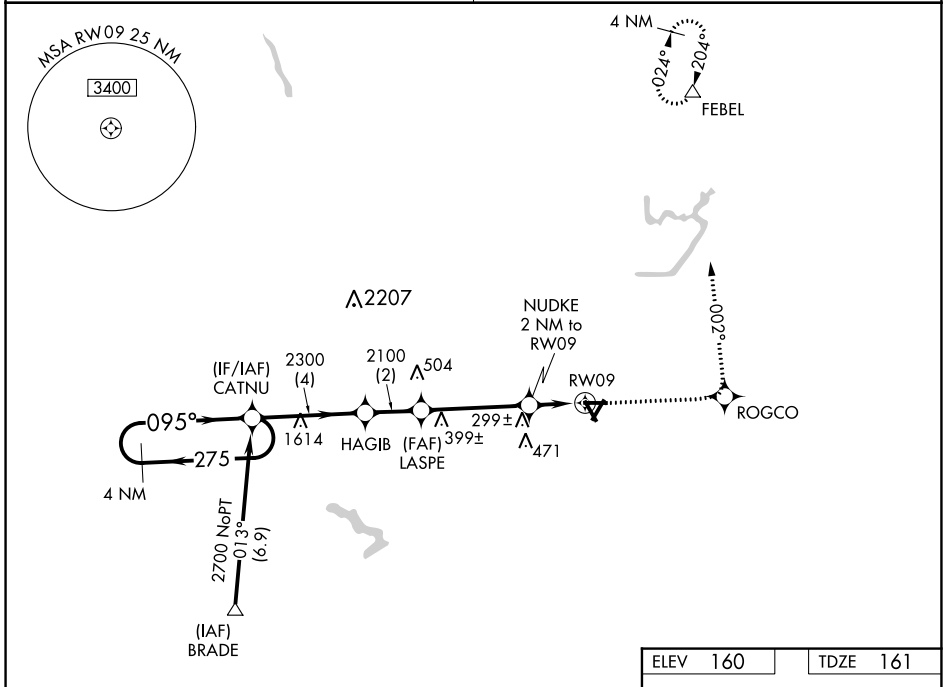
# RNAV (GPS) RWY 9

WILSON INDUSTRIAL AIR CENTER (W03)

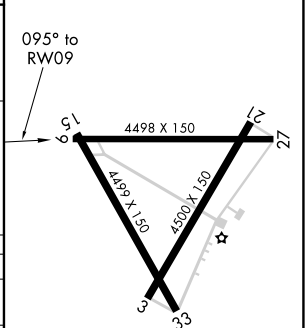
**▼** DME/DME RNP-0.3 NA. Procedure NA at night. Visibility reduction by helicopters NA. Obtain local altimeter setting on CTAF; when not received use Rocky Mount altimeter setting.

**▲** MISSED APPROACH: Climb to 2500 direct ROGCO then left turn via 002° track to FEBEL and hold.

WASHINGTON CENTER <b>123.85 279.65</b>	UNICOM <b>123.0 (CTAF) 0</b>
---	---------------------------------



ELEV	160	TDZE	161
------	-----	------	-----



CATEGORY	A	B	C	D
LNVA MDA	560-1 399 (400-1)		560-1¼ 399 (400-1¼)	
CIRCLING	660-1 500 (500-1)	780-1¾ 620 (700-1¾)		780-2 620 (700-2)
ROCKY MOUNT ALTIMETER SETTING MINIMUMS				
LNVA MDA	580-1 419 (500-1)		580-1¼ 419 (500-1¼)	
CIRCLING	680-1 520 (600-1)		800-1¾ 640 (700-1¾) 800-2 640 (700-2)	

REIL Rwy 3 and 21 **0**  
MIRL Rwy 3-21 **0**