

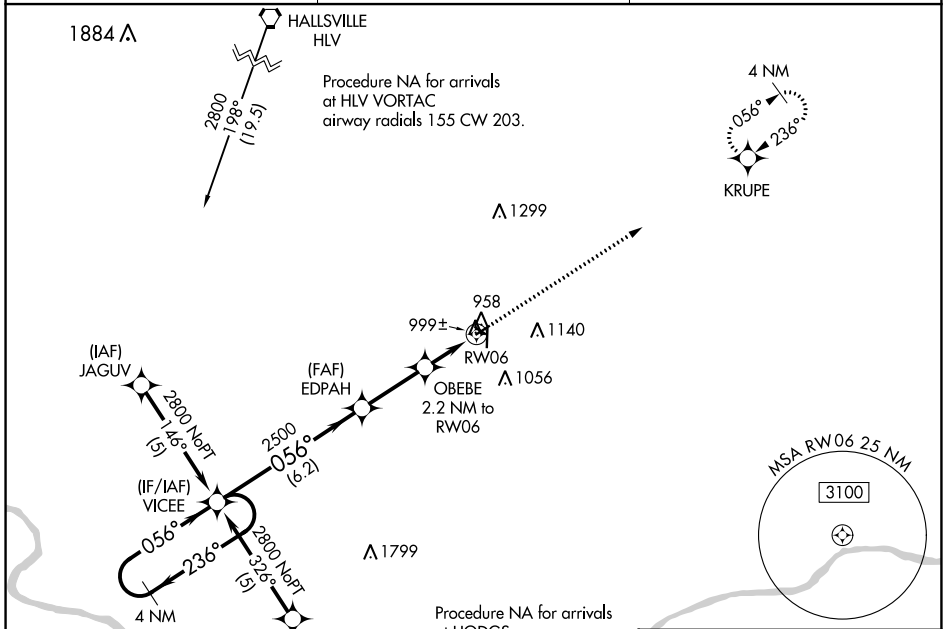
APP CRS	Rwy Idg	<b>3203</b>
<b>056°</b>	TDZE	<b>882</b>
	Apt Elev	<b>887</b>

# RNAV (GPS) RWY 6

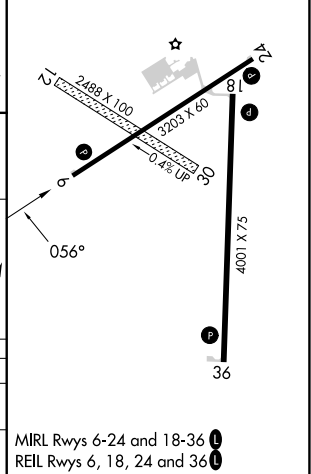
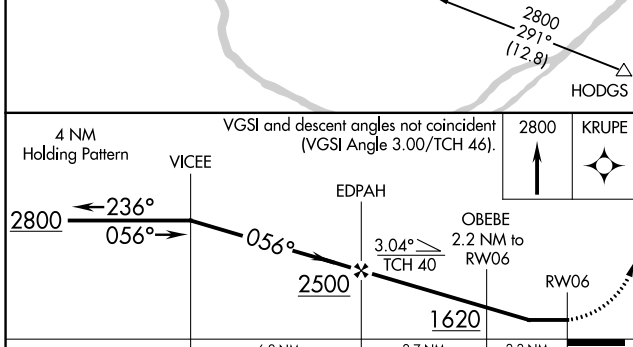
ELTON HENSLEY MEML (F'TT)

RNP APCH.	Use Columbia altimeter setting; when not received, use Jefferson City altimeter setting and increase all MDA 80 feet. Rwy 6 helicopter visibility reduction below 3/4 SM NA. Circling Rwy 18, 24 NA at night.	MISSED APPROACH: Climb to 2800 direct KRUP E and hold.
▼ ▲ NA		

COU ASOS <b>128.45</b>	MIZU APP CON <b>124.375 353.925</b>	UNICOM <b>122.7 (CTAF) 1</b>
---------------------------	----------------------------------------	---------------------------------



ELEV 887	TDZE 882
----------	----------



CATEGORY	A	B	C	D
LNVA MDA	1300-1	418 (500-1)	1300-1 1/4 418 (500-1 1/4)	NA
CIRCLING	1380-1 493 (500-1)	1480-1 593 (600-1)	1560-2 673 (700-2)	NA

MIRL Rwy 6-24 and 18-36 1  
REL Rwy 6, 18, 24 and 36 1

NC-3, 26 DEC 2024 to 23 JAN 2025

NC-3, 26 DEC 2024 to 23 JAN 2025