

WAAS CH 93530 W04A	APP CRS 040°	Rwy Idg TDZE Apt Elev	3600 1168 1171
--	------------------------	-----------------------------	---

RNAV (GPS) RWY 4

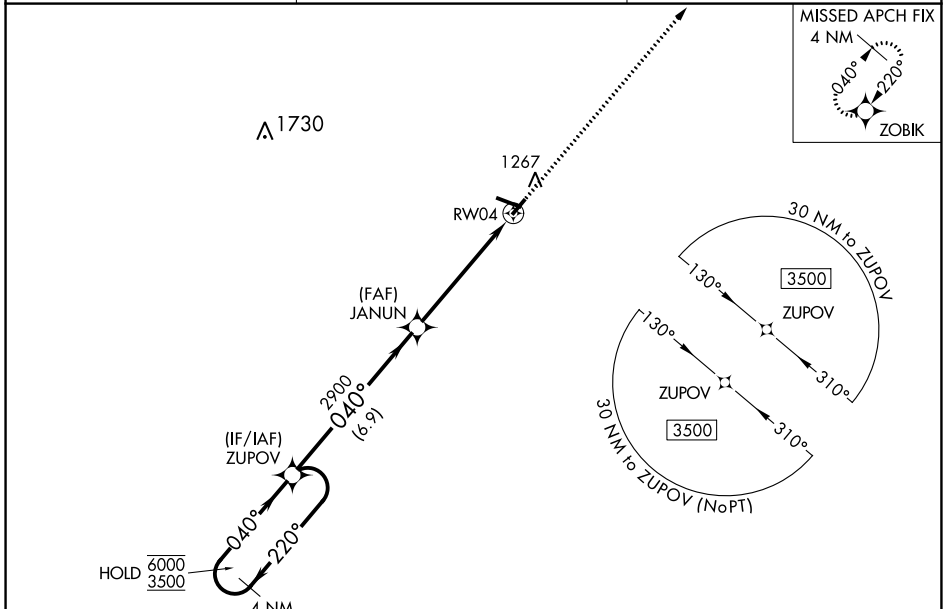
IOWA COUNTY (MRJ)

RNP APCH - GPS.

⚠ Baro-VNAV and VDP NA when using Platteville altimeter setting. For uncompensated Baro-VNAV systems, LNAV/VNAV NA below -17°C or above 54°C. When local altimeter setting not received, use Platteville altimeter setting and increase LPV DA to 1473 feet, increase LNAV/VNAV DA to 1498 feet, increase all MDAs 60 feet, and LNAV visibility Cat C ¼ SM.

MISSED APPROACH:
Climb to 3600 direct ZOBIK and hold.

AWOS-3 118.525	CHICAGO CENTER 133.95 281.4	UNICOM 122.8 (CTAF) 0
--------------------------	---------------------------------------	---------------------------------



EC-3, 26 DEC 2024 to 23 JAN 2025

EC-3, 26 DEC 2024 to 23 JAN 2025

4 NM Holding Pattern		VGSI and RNAV glidepath not coincident (VGSI Angle 3.00/TCH 31).		ELEV 1171	TDZE 1168
ZUPOV		JANUN		3600	ZOBIK
6000 ← 220°		2900		↑	✦
3500 → 040°		1.2 NM to RWY 4			
GP 3.00° TCH 40		RWY 4			
6.9 NM		4.1 NM			
CATEGORY	A	B	C	D	
LPV DA	1418-1	250 (300-1)		NA	
LNAV/VNAV DA	1443-1	275 (300-1)		NA	
LNAV MDA	1580-1	412 (500-1)	1580-1½ 412 (500-1½)	NA	
CIRCLING	1620-1 449 (500-1)	1640-1 469 (500-1)	1640-1½ 469 (500-1½)	NA	

