

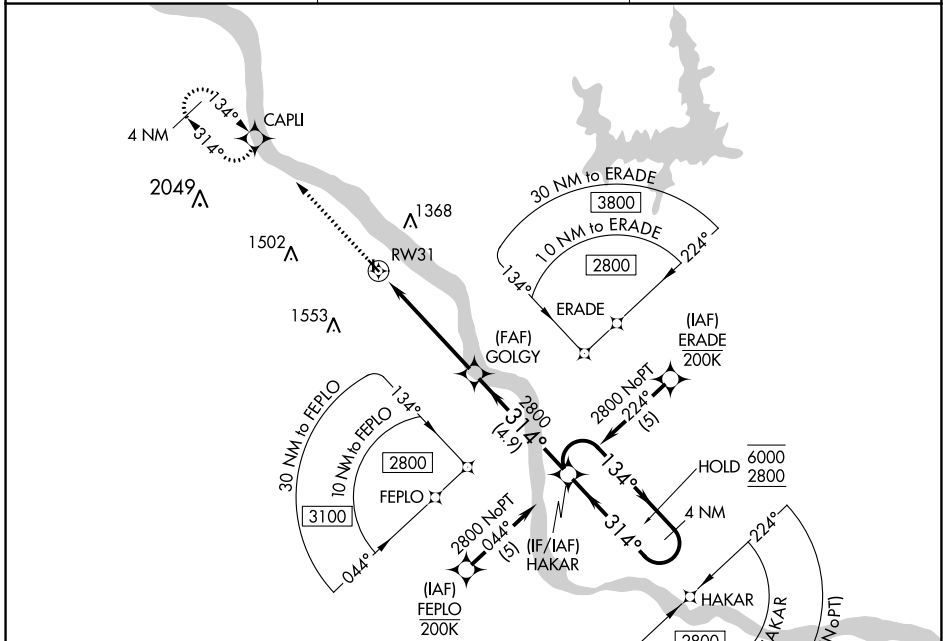
APP CRS 314°	Rwy ldg TDZE Apt Elev	3004 1167 1169
------------------------	-----------------------------	---

RNAV (GPS) RWY 31

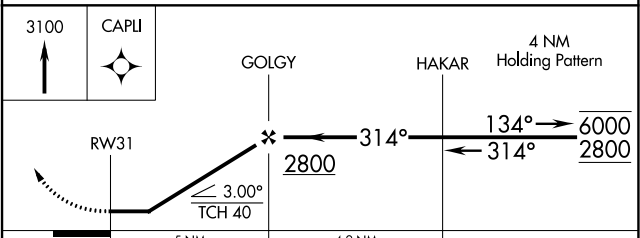
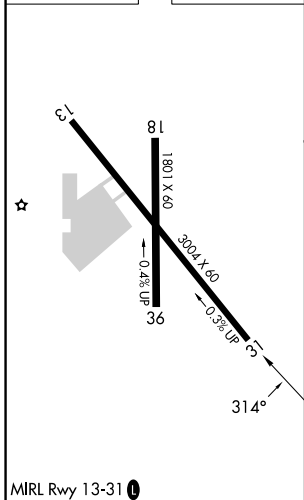
DAVID JAY PERRY (1K4)

RNP APCH - GPS.	<p>▼ Rwy 31 helicopter visibility reduction below 1 SM NA.</p> <p>▲ NA Procedure NA at night. Use OKC altimeter setting.</p>	MISSED APPROACH: Climb to 3100 direct CAPLI and hold, continue climb-in-hold to 3100.
-----------------	--	---

OKC ASOS 125.85	OKE CITY APP CON 120.45 288.325	UNICOM 122.7 (CTAF) 0
---------------------------	---	--



ELEV 1169	TDZE 1167
-----------	-----------



CATEGORY	A	B	C	D
LNAV MDA	1680-1	513 (600-1)	1680-1 $\frac{3}{8}$ 513 (600-1 $\frac{3}{8}$)	NA
CIRCLING	1700-1 531 (600-1)	1840-1 671 (700-1)	1920-2 $\frac{1}{4}$ 751 (800-2 $\frac{1}{4}$)	NA

SC-1, 26 DEC 2024 to 23 JAN 2025

SC-1, 26 DEC 2024 to 23 JAN 2025