

WAAS CH 90331 W23A	APP CRS 229°	Rwy Idg TDZE 166 Apt Elev 166	5000
--	------------------------	---	-------------

RNAV (GPS) RWY 23

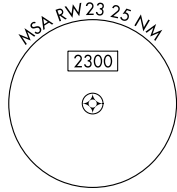
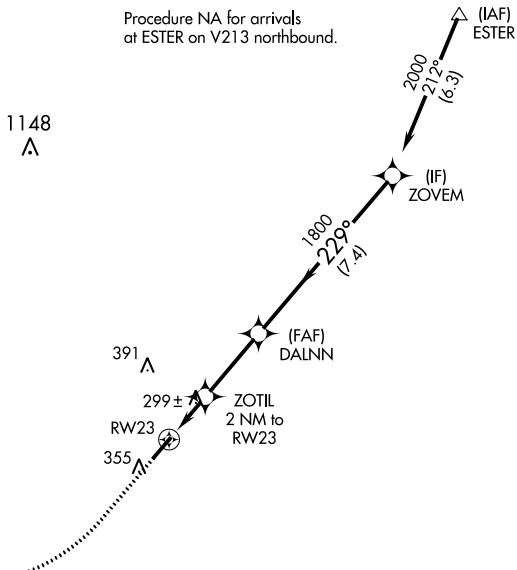
MOUNT OLIVE MUNI (W40)

RNP APCH - GPS.

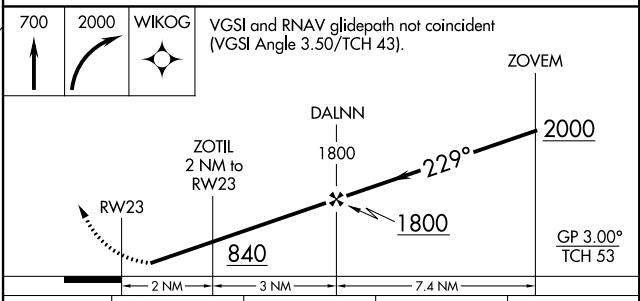
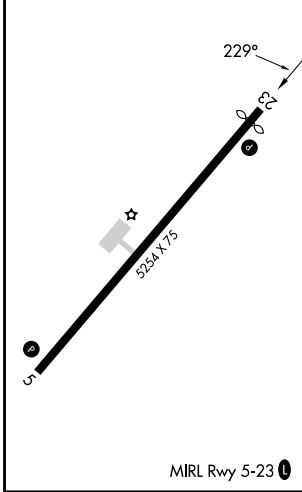
⚠ Rwy 23 helicopter visibility reduction below $\frac{3}{4}$ SM NA.
When local altimeter setting not received, use Goldsboro altimeter setting.

MISSED APPROACH: Climb to 700 then climbing right turn to 2000 direct WIKOG and hold.

AWOS-3P 120.075	SEYMOUR JOHNSON APP CON * 119.7 273.6	UNICOM 122.8 (CTAF) 0
---------------------------	---	---------------------------------



ELEV 166	TDZE 166
----------	----------



CATEGORY	A	B	C	D
LPV DA	452-1	286 (300-1)		NA
LNAV MDA	580-1	414 (500-1)	580-1 $\frac{1}{8}$ 414 (500-1 $\frac{1}{8}$)	NA
CIRCLING	700-1	534 (600-1)	720-1 $\frac{1}{2}$ 554 (600-1 $\frac{1}{2}$)	NA

SE-2, 26 DEC 2024 to 23 JAN 2025

SE-2, 26 DEC 2024 to 23 JAN 2025