

RADAR and DME required.

**TOP ALTITUDE:  
ASSIGNED BY ATC**

**TAKEOFF MINIMUMS**  
Rwys 17, 35: NA - Environmental.  
Rwys 12, 30: Standard.



CLNC DEL  
121.15  
CTAF  
122.9  
HOUSTON DEP CON  
134.45 284.0

FORT STOCKTON  
116.9 FST  
Chan 116

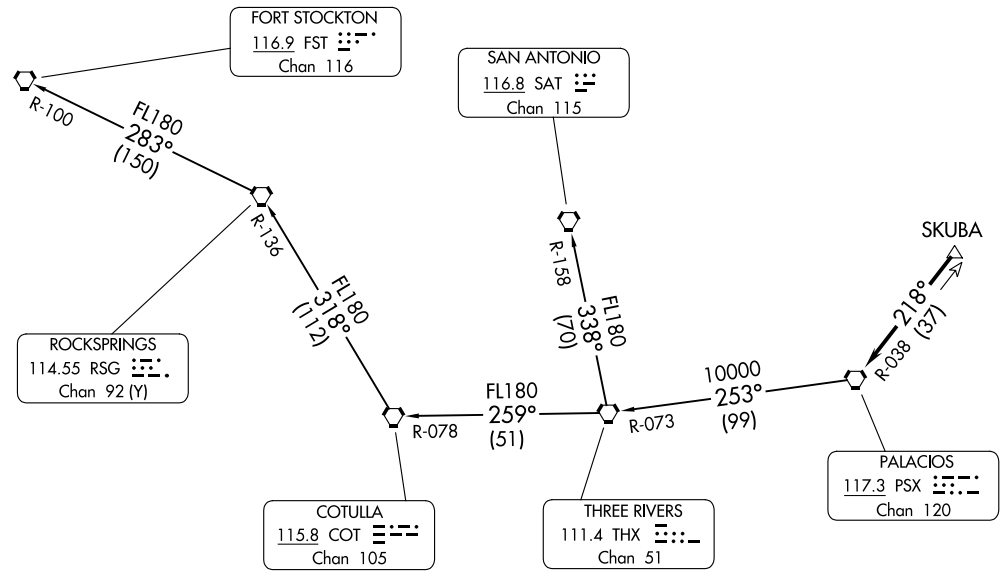
SAN ANTONIO  
116.8 SAT  
Chan 115

ROCKSPRINGS  
114.55 RSG  
Chan 92 (Y)

COTULLA  
115.8 COT  
Chan 105

THREE RIVERS  
111.4 THX  
Chan 51

PALACIOS  
117.3 PSX  
Chan 120



PALACIOS THREE DEPARTURE  
(PSX3, PSX) 03NOV22

(PSX3, PSX) 24137  
PALACIOS THREE DEPARTURE

CHAMBERS COUNTY (TMM)  
ANAHUAC, TEXAS

CHAMBERS COUNTY (TMM)  
ANAHUAC, TEXAS

NOTE: Chart not to scale.

(CONTINUED ON FOLLOWING PAGE)

# PALACIOS THREE DEPARTURE



## DEPARTURE ROUTE DESCRIPTION

TAKEOFF ALL RUNWAYS: When entering controlled airspace, climb on assigned heading for RADAR vectors to SKUBA. Maintain ATC assigned altitude. Expect filed altitude 10 minutes after departure, thence . . . .

. . . . on PSX R-038 to PSX VORTAC.

FORT STOCKTON TRANSITION (PSX3.FST): From over PSX VORTAC on PSX R-253 and THX R-073 to THX VORTAC, then on THX R-259 and COT R-078 to COT VORTAC, then on COT R-318 and RSG R-136 to RSG VORTAC, then on RSG R-283 and FST R-100 to FST VORTAC.

SAN ANTONIO TRANSITION (PSX3.SAT): From over PSX VORTAC on PSX R-253 and THX R-073 to THX VORTAC, then on SAT R-158 to SAT VORTAC.

SC-5, 26 DEC 2024 to 23 JAN 2025

SC-5, 26 DEC 2024 to 23 JAN 2025