

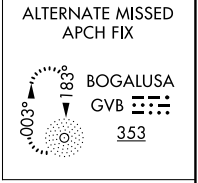
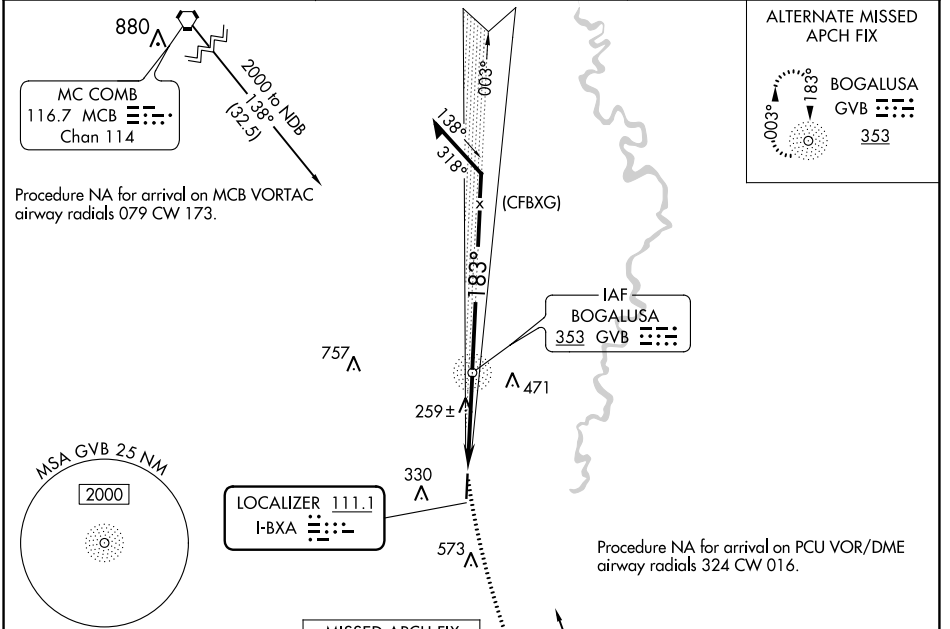
LOC I-BXA 111.1	APP CRS 183°	Rwy ldg TDZE Apt Elev	5002 119 119
---------------------------	------------------------	-----------------------------	---

LOC RWY 18

GEORGE R CARR MEML AIR FLD (BXA)

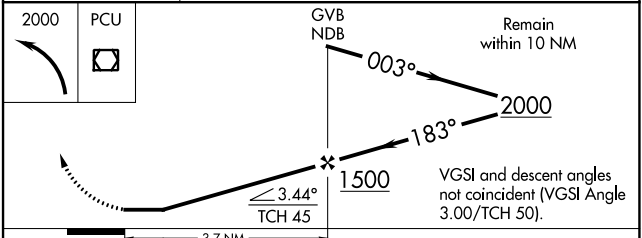
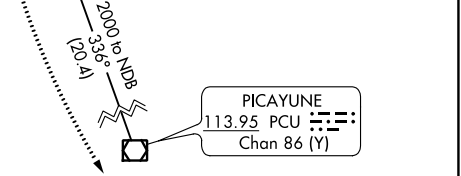
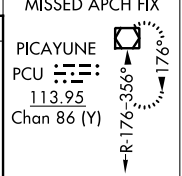
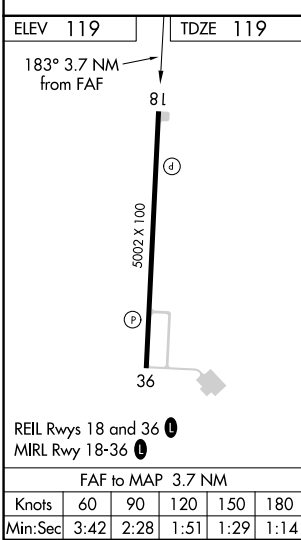
ADF required ▼ ▲	MISSED APPROACH: Climbing left turn to 2000 direct PCU VOR/DME and hold.
------------------------	--

AWOS-3PT 118.025	HOUSTON CENTER 126.8 327.8	UNICOM 122.8 (CTAF) 0
----------------------------	--------------------------------------	---------------------------------



Procedure NA for arrival on MCB VORTAC airway radials 079 CW 173.

Procedure NA for arrival on PCU VOR/DME airway radials 324 CW 016.



CATEGORY	A	B	C	D
S-18	520-1	401 (500-1)	520-1 1/8 401 (500-1 1/8)	NA
CIRCLING	620-1 501 (600-1)	720-1 601 (700-1)	880-2 1/4 761 (800-2 1/4)	NA

LOC RWY 18

SC-4, 26 DEC 2024 to 23 JAN 2025

SC-4, 26 DEC 2024 to 23 JAN 2025