

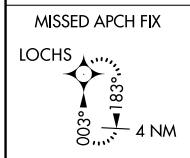
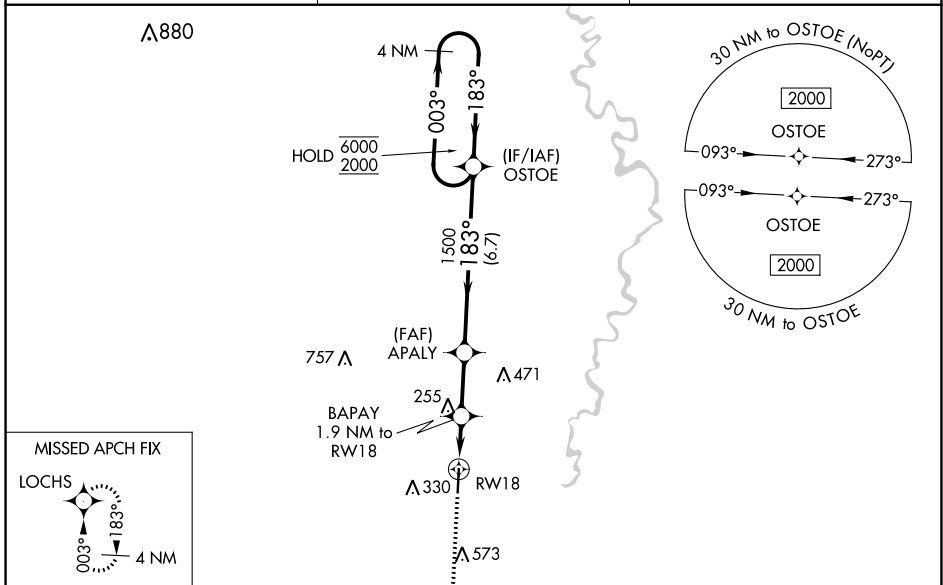
WAAS CH 72613 W18A	APP CRS 183°	Rwy Idg TDZE 119 Apt Elev 119	5002
--	------------------------	---	-------------

RNAV (GPS) RWY 18

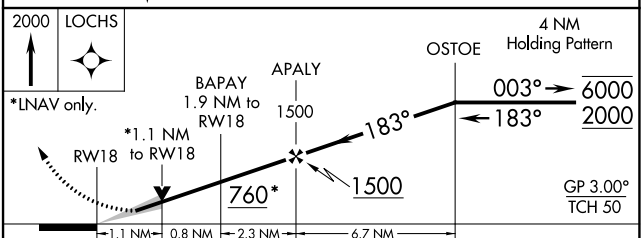
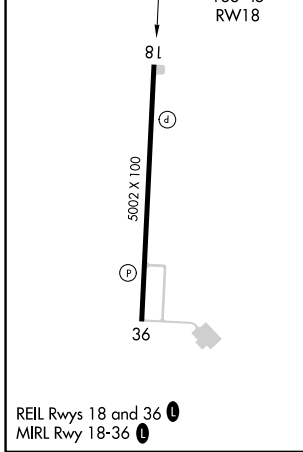
GEORGE R CARR MEML AIR FLD (B.X.A)

RNP APCH.	MISSED APPROACH: Climb to 2000 direct LOCHS and hold.
For uncompensated Baro-VNAV systems, procedure NA below -15°C or above 54°C.	

AWOS-3PT 118.025	HOUSTON CENTER 126.8 327.8	UNICOM 122.8 (CTAF) 0
----------------------------	--------------------------------------	---------------------------------



ELEV 119	TDZE 119
-----------------	-----------------



CATEGORY	A	B	C	D
LPV DA	387-1		268 (300-1)	NA
LNAV/VNAV DA	554-1 ³ / ₈		435 (500-1 ¹ / ₈)	NA
LNAV MDA	520-1	401 (500-1)	520-1 ¹ / ₈ 401 (500-1 ¹ / ₈)	NA
CIRCLING	620-1 501 (600-1)	720-1 601 (700-1)	880-2 ¹ / ₄ 761 (800-2 ¹ / ₄)	NA

SC-4, 26 DEC 2024 to 23 JAN 2025

SC-4, 26 DEC 2024 to 23 JAN 2025