

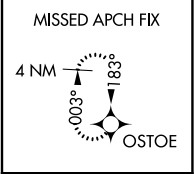
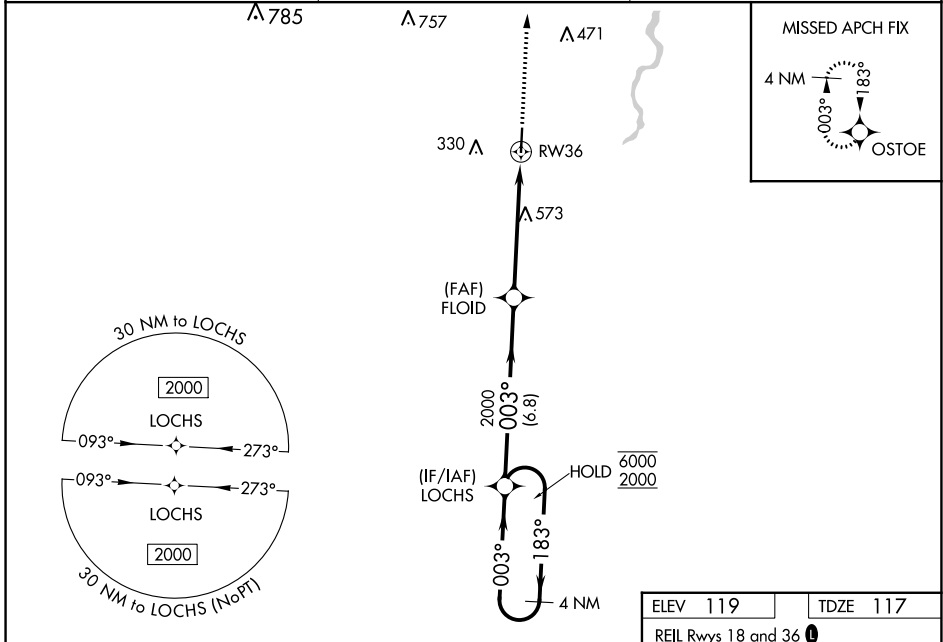
WAAS CH <b>62913</b> <b>W36A</b>	APP CRS <b>003°</b>	Rwy Idg <b>5002</b> TDZE <b>117</b> Apt Elev <b>119</b>
--	------------------------	---

# RNAV (GPS) RWY 36

GEORGE R CARR MEML AIR FLD (BXA)

RNP APCH.	MISSED APPROACH: Climb to 2000 direct OSTOE and hold.
<p>▼</p> <p>▲ Rwy 36 helicopter visibility reduction below 3/4 SM NA. For uncompensated Baro-VNAV systems, LNAV/VNAV NA below -15°C or above 54°C.</p>	

AWOS-3PT <b>118.025</b>	HOUSTON CENTER <b>126.8 327.8</b>	UNICOM <b>122.8 (CTAF) 0</b>
----------------------------	--------------------------------------	---------------------------------



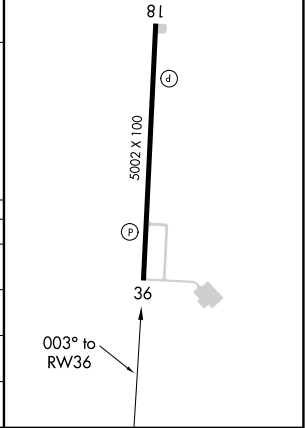
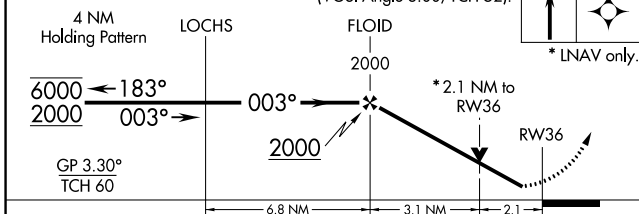
SC-4, 26 DEC 2024 to 23 JAN 2025

SC-4, 26 DEC 2024 to 23 JAN 2025

VGSI and RNAV glidepath not coincident (VGSI Angle 3.00/TCH 52).

ELEV 119	TDZE 117
----------	----------

REIL Rwy 18 and 36 0  
MIRL Rwy 18-36 0



CATEGORY	A	B	C	D
LPV DA	421-1	304 (400-1)		NA
LNAV/VNAV DA	512-1 1/8	395 (400-1 1/8)		NA
LNAV MDA	840-1	723 (800-1)	840-2 723 (800-2)	NA
CIRCLING	840-1	721 (800-1)	880-2 1/4 761 (800-2 1/4)	NA