

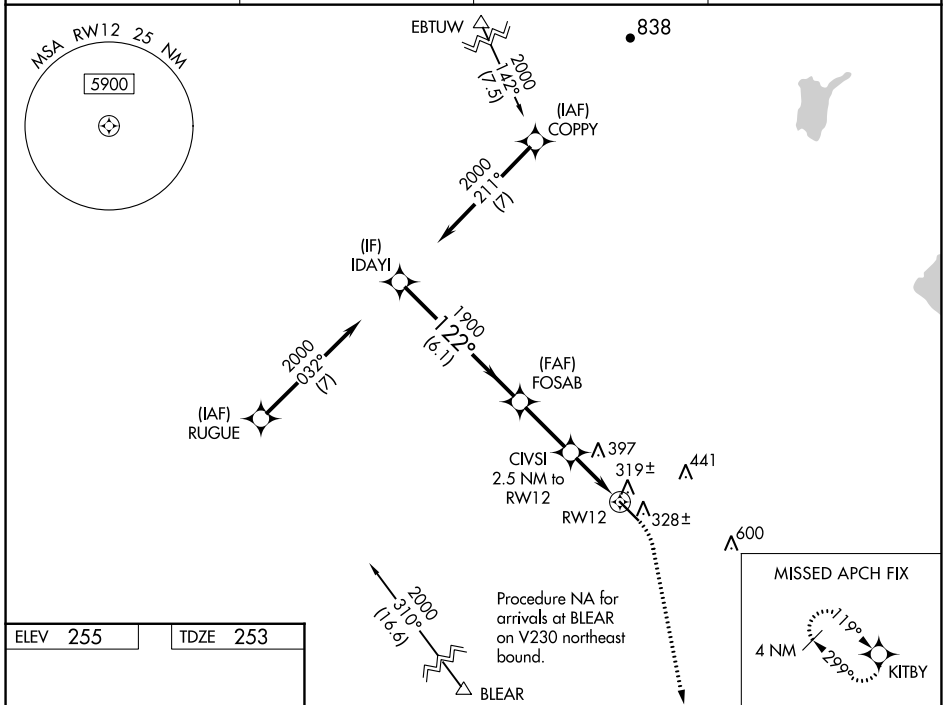
WAAS CH <b>62909</b> <b>W12A</b>	APP CRS <b>122°</b>	Rwy Idg TDZE Apt Elev	<b>5545</b> <b>253</b> <b>255</b>
--	------------------------	-----------------------------	---

# RNAV (GPS) RWY 12

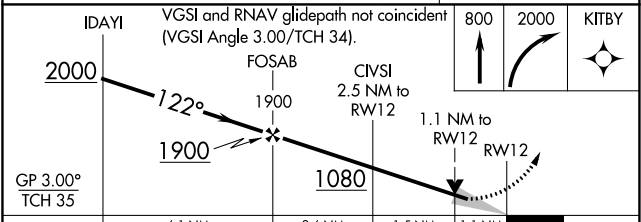
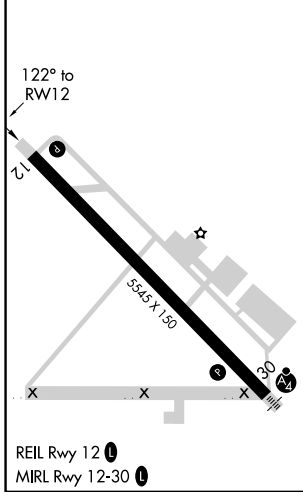
MADERA MUNI (M.A.E)

RNP APCH - GPS.		MISSED APPROACH: Climb to 800 then climbing right turn to 2000 direct KITBY and hold.	
<p><b>⚠</b> For uncompensated Baro-VNAV systems, LNAV/VNAV NA below -2°C or above 54°C.</p>			

ASOS <b>134.725</b>	FRESNO APP CON <b>119.45</b>	CLNC DEL <b>119.45</b>	UNICOM <b>122.8</b> (CTAF) <b>📻</b>
------------------------	---------------------------------	---------------------------	--



ELEV 255	TDZE 253
----------	----------



CATEGORY	A	B	C	D
LPV DA	503-3/4	250 (300-3/4)		NA
LNAV/VNAV DA	503-3/4	250 (300-3/4)		NA
LNAV MDA	620-1	367 (400-1)		NA
<b>📻</b> CIRCLING	680-1 425 (500-1)	720-1 465 (500-1)	760-1 1/2 505 (600-1 1/2)	NA

SW-2, 26 DEC 2024 to 23 JAN 2025

SW-2, 26 DEC 2024 to 23 JAN 2025