

| | | |
|-------------|----------|-------------|
| APP CRS | Rwy Idg | 4504 |
| 271° | TDZE | 481 |
| | Apt Elev | 481 |

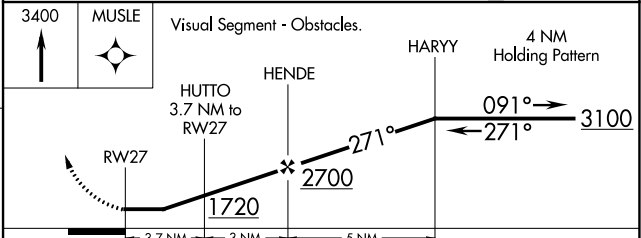
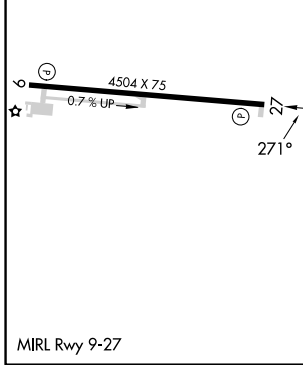
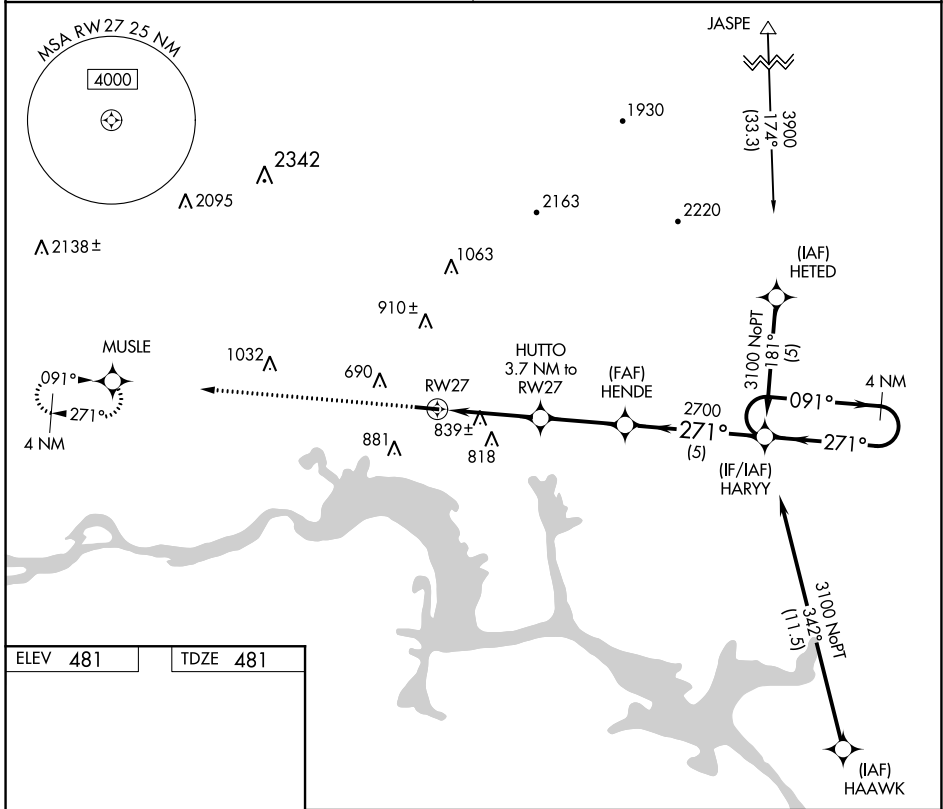
RNAV (GPS) RWY 27

CLARKSVILLE MUNI (H35)

NA Use Russellville Rgnl altimeter setting; if not received, use Fort Smith Rgnl altimeter setting and increase all MDAs 60 feet. DME/DME RNP-0.3 NA. Procedure NA at night. Rwy 27 helicopter visibility reduction below 1 SM NA.

MISSED APPROACH: Climb to 3400 direct MUSLE WP and hold.

| | |
|---|-------------------------------|
| MEMPHIS CENTER 128.475 377.15 | UNICOM 122.8 (CTAF) |
|---|-------------------------------|



| CATEGORY | A | B | C | D |
|----------|-----------------------|-------------------------|----|---|
| LNAV MDA | 1160-1 | 679 (700-1) | NA | |
| CIRCLING | 1220-1 739 (800-1) | 1240-1¼ 759 (800-1¼) | NA | |

SC-1, 26 DEC 2024 to 23 JAN 2025

SC-1, 26 DEC 2024 to 23 JAN 2025