

WAAS CH 86638 W24A	APP CRS 235°	Rwy Idg 5500 TDZE 86 Apt Elev 99
--	------------------------	---

RNAV (GPS) RWY 24

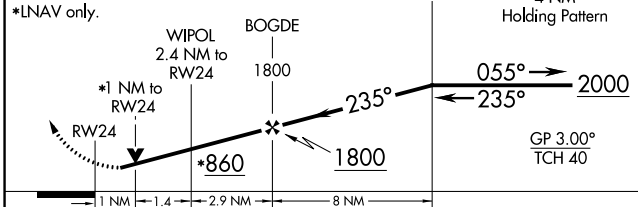
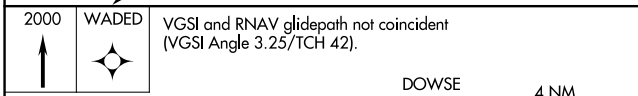
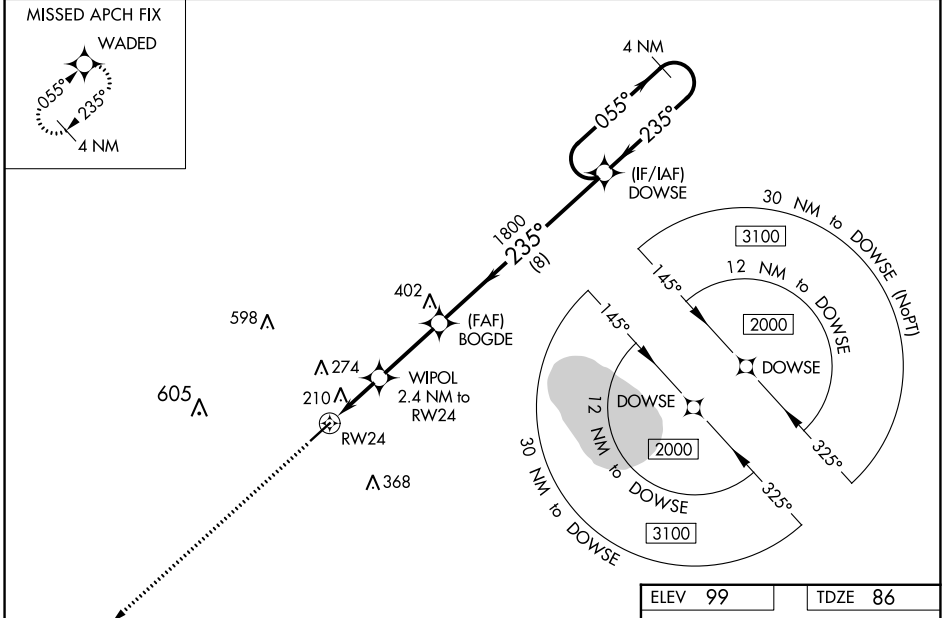
COLUMBUS COUNTY MUNI (CPC)

RNP APCH.

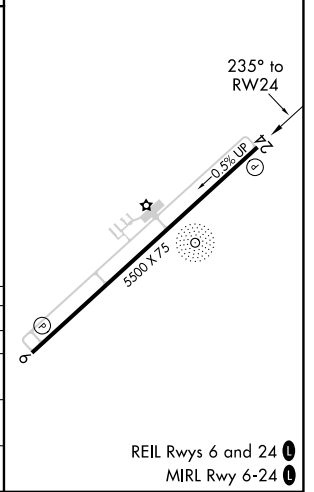
▼ For uncompensated Baro-VNAV systems, LNAV/VNAV NA below -15°C (5°F) or above 54°C (130°F). Baro-VNAV and VDP NA when using Elizabethtown altimeter setting.
 ▲ Helicopter visibility reduction below ¾ SM NA. When local altimeter setting not received, use Elizabethtown altimeter setting and increase LPV DA to 427 feet, LNAV/VNAV DA to 441 feet and all visibilities ¼ mile. Increase all MDA 60 feet and all Cat C and D visibilities ¼ mile.

MISSED APPROACH:
Climb to 2000 direct
WADED and hold.

AWOS-3 118.375	MYRTLE BEACH APP CON * 119.2 350.3	UNICOM 122.8 (CTAF) 0
--------------------------	--	---------------------------------



ELEV 99	TDZE 86
----------------	----------------



CATEGORY	A	B	C	D
LPV DA		374-1	288 (300-1)	
LNAV/VNAV DA		388-1½	302 (300-1½)	
LNAV MDA		460-1	374 (400-1)	
CIRCLING	520-1	580-1	680-1½	780-2¼
	421 (500-1)	481 (500-1)	581 (600-1½)	681 (700-2¼)

REIL Rws 6 and 24 0
MIRL Rwy 6-24 0

SE-2, 26 DEC 2024 to 23 JAN 2025

SE-2, 26 DEC 2024 to 23 JAN 2025