

APP CRS 255°	Rwy Idg 3111
	TDZE 1771
	Apt Elev 1783

RNAV (GPS) RWY 26

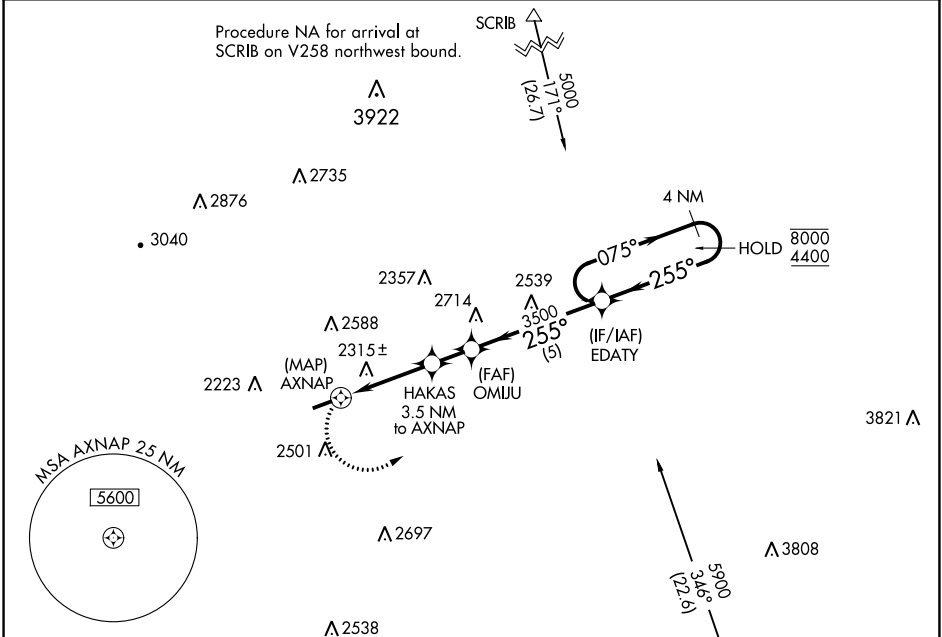
KEE FLD (I16)

RNP APCH - GPS.

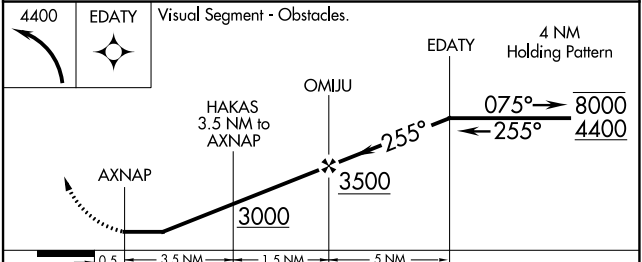
▼ Rwy 26 helicopter visibility reduction below 1 SM NA.
▲ Procedure NA at night.

MISSED APPROACH: Climbing left turn to 4400 direct EDATY and hold.

AWOS-3 120.625	CHARLESTON APP CON 125.4 269.125	UNICOM 122.8 (CTAF) 0
--------------------------	--	---------------------------------



ELEV 1783	TDZE 1771
-----------	-----------



MIRL Rwy 8-26 0				
REIL Rwy 8 and 26 0				
CATEGORY	A	B	C	D
LNAV MDA	2580-1 809 (800-1)	2580-1 1/4 809 (800-1 1/4)	2580-2 1/2 809 (800-2 1/2)	NA

NE-4, 26 DEC 2024 to 23 JAN 2025

NE-4, 26 DEC 2024 to 23 JAN 2025