

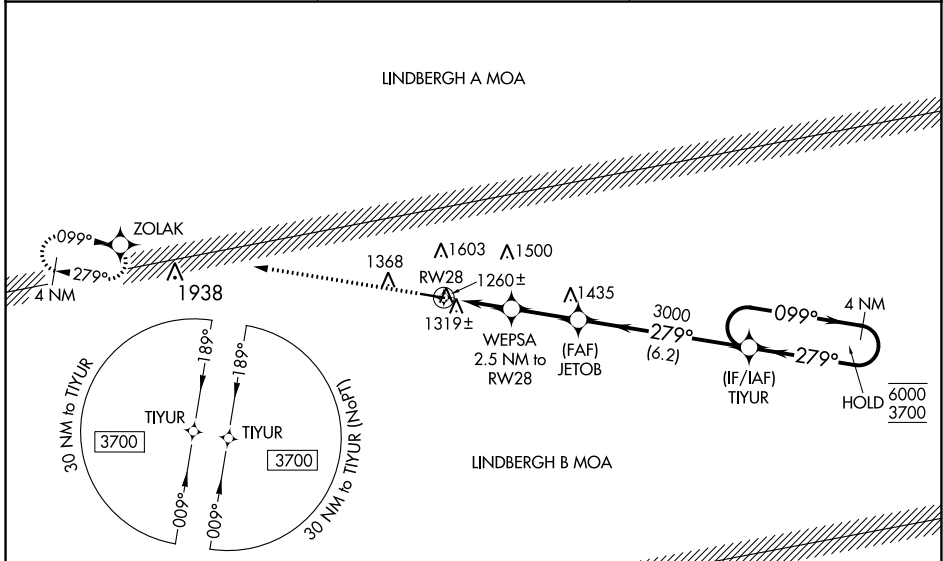
WAAS CH <b>63232</b> <b>W28A</b>	APP CRS <b>279°</b>	Rwy Idg TDZE <b>1162</b> Apt Elev <b>1182</b>	<b>5005</b> <b>1162</b> <b>1182</b>
--	------------------------	---	---

# RNAV (GPS) RWY 28

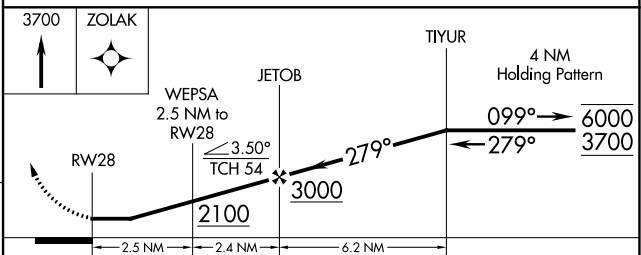
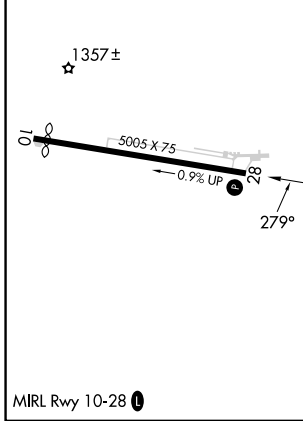
MOUNTAIN VIEW (MNF)

RNP APCH - GPS.		MISSED APPROACH: Climb to 3700 direct ZOLAK and hold.
<p><b>▼</b> Circling Rwy 10 NA at night. Rwy 28 helicopter visibility reduction below 1 SM NA.</p> <p><b>▲NA</b> Use West Plains altimeter setting; when not received, use Fort Leonard Wood altimeter setting and increase all MDA 100 feet; increase LP Cat C/D visibility ¼ SM, LNAV Cat C/D visibility ¼ SM and Circling Cat B/C visibility ¼ SM. Straight-in Rwy 28 at night, Circling Rwy 28 at night, operational VGSI required, remain on or above VGSI glidepath until threshold.</p>		

UNO ASOS <b>123.825</b>	KANSAS CITY CENTER <b>128.35 284.675</b>	UNICOM <b>122.8 (CTAF)</b>
----------------------------	---	-------------------------------



ELEV 1182	TDZE 1162
-----------	-----------



CATEGORY	A	B	C	D
LP MDA	1560-1	398 (400-1)	1560-1½	398 (400-1½)
LNAV MDA	1620-1	458 (500-1)	1620-1¾	458 (500-1¾)
CIRCLING	1880-1 698 (700-1)	2080-1¼ 898 (900-1¼)	2080-2¾ 898 (900-2¾)	2180-3 998 (1000-3)

NC-3, 26 DEC 2024 to 23 JAN 2025

NC-3, 26 DEC 2024 to 23 JAN 2025