

|  |                        |   |             |
|--|------------------------|---|-------------|
| WAAS<br>CH <b>86233</b><br><b>W26A</b> | APP CRS<br><b>264°</b> | Rwy Idg<br>TDZE <b>176</b><br>Apt Elev <b>176</b> | <b>5004</b> |
|--|------------------------|---|-------------|

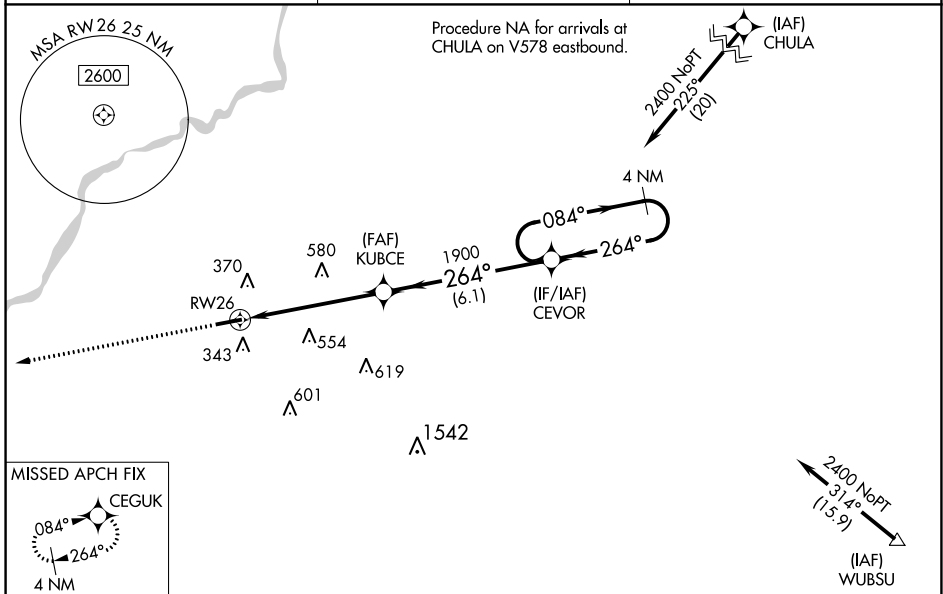
# RNAV (GPS) RWY 26

CAMILLA-MITCHELL COUNTY (CXU)

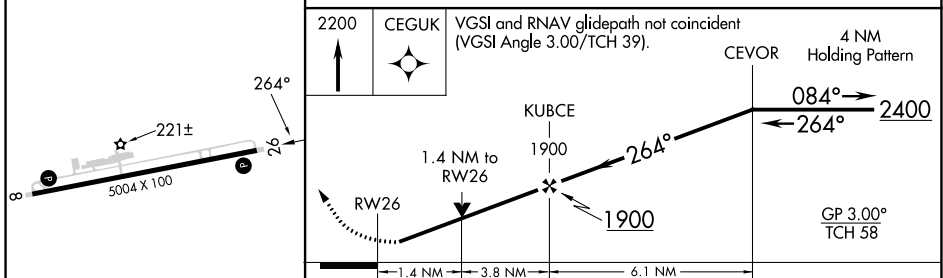
**NA** Baro-VNAV NA when using Albany altimeter setting. For uncompensated Baro-VNAV systems, LNAV/VNAV NA below -15°C (5°F) or above 54°C (130°F). DME/DME RNP-0.3 NA. When local altimeter setting not received, use Albany altimeter setting and increase LPV DA to 553 feet; increase LNAV/VNAV DA to 601 feet; increase all MDAs 60 feet and LNAV Cats C/D and Circling Cat D visibility ¼ SM. Rwy 26 helicopter visibility reduction below ¾ SM NA.

**MISSED APPROACH:** Climb to 2200 direct CEGUK and hold.

|                                  |   |   |
|----------------------------------|---|---|
| <b>AWOS-3T</b><br><b>118.675</b> | <b>JACKSONVILLE CENTER</b><br><b>125.75 363.075</b> | <b>UNICOM</b><br><b>122.8 (CTAF)</b> <b>📻</b> |
|----------------------------------|---|---|



|          |          |
|----------|----------|
| ELEV 176 | TDZE 176 |
|----------|----------|



|              |                      |                      |                        |                        |
|--------------|----------------------|----------------------|------------------------|------------------------|
| CATEGORY     | A                    | B                    | C                      | D                      |
| LPV DA       | 505-1                |                      | 329 (400-1)            |                        |
| LNAV/VNAV DA | 553-1¼               |                      | 377 (400-1¼)           |                        |
| LNAV MDA     | 660-1                | 484 (500-1)          | 660-1⅜                 | 484 (500-1⅜)           |
| CIRCLING     | 720-1<br>544 (600-1) | 760-1<br>584 (600-1) | 920-2¼<br>744 (800-2¼) | 940-2½<br>764 (800-2½) |

REIL Rwy 8 and 26 **📻**  
MIRL Rwy 8-26 **📻**

CAMILLA, GEORGIA  
Amdt 1D 21APR22

31°13'N-84°14'W

# RNAV (GPS) RWY 26

SE-4, 26 DEC 2024 to 23 JAN 2025

SE-4, 26 DEC 2024 to 23 JAN 2025