

WAAS CH <b>40033</b> <b>W08A</b>	APP CRS <b>084°</b>	Rwy Idg TDZE <b>170</b> Apt Elev <b>176</b>	<b>5004</b>
--	------------------------	---	-------------

# RNAV (GPS) RWY 8

CAMILLA-MITCHELL COUNTY (CXU)

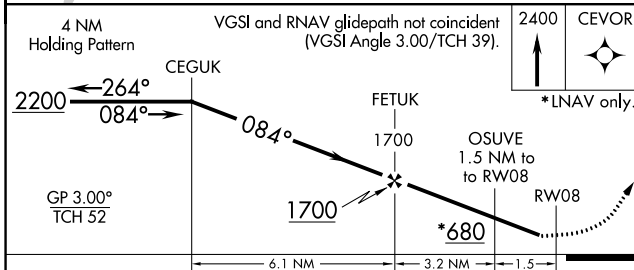
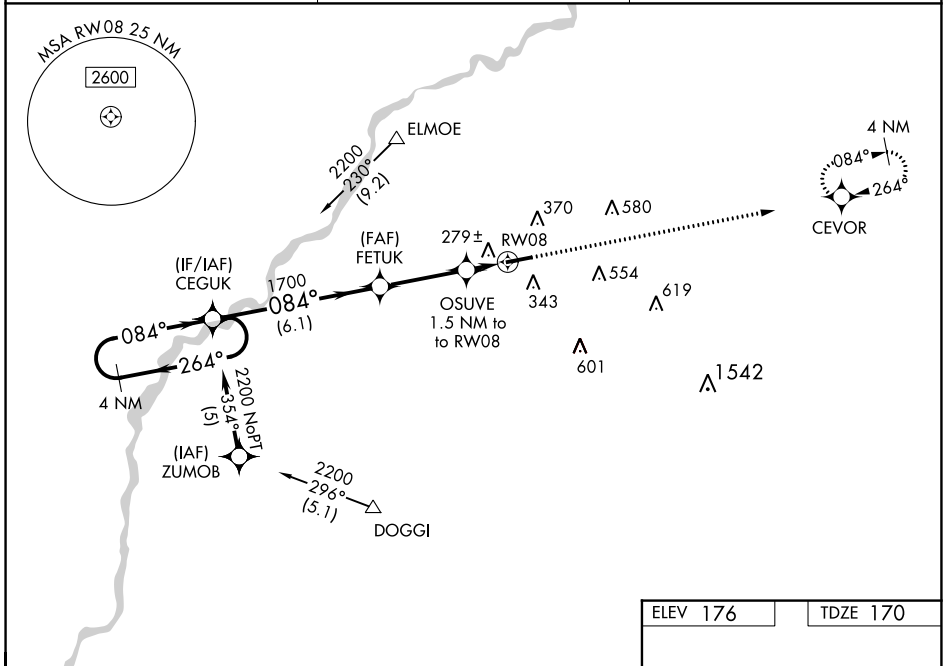
**⚠** Baro-VNAV NA when using Albany altimeter setting. For uncompensated Baro-VNAV systems, LNAV/VNAV NA below -1.5°C (5°F) or above 54°C (130°F). DME/DME RNP-0.3 NA. When local altimeter setting not received, use Albany altimeter setting and increase LPV DA to 513 feet; increase LNAV/VNAV DA to 623 feet; increase all MDAs 60 feet and LNAV Cats C/D and Circling Cat D visibility ¼ SM.

**MISSED APPROACH:**  
Climb to 2400 direct CEVOR and hold.

AWOS-3T  
**118.675**

JACKSONVILLE CENTER  
**125.75 363.075**

UNICOM  
**122.8 (CTAF) 0**



ELEV 176	TDZE 170
----------	----------

REIL Rwy 8 and 26 0  
MIRL Rwy 8-26 0

CATEGORY	A	B	C	D
LPV DA		465-1	295 (300-1)	
LNAV/VNAV DA		575-1 3/8	405 (400-1 3/8)	
LNAV MDA		540-1	370 (400-1)	
CIRCLING	720-1 544 (600-1)	760-1 584 (600-1)	920-2 1/4 744 (800-2 1/4)	940-2 1/2 764 (800-2 1/2)

SE-4, 26 DEC 2024 to 23 JAN 2025

SE-4, 26 DEC 2024 to 23 JAN 2025