

| | | | |
|--|------------------------|-----------------------------|---|
| WAAS CH 45840 W20A | APP CRS 201° | Rwy Idg TDZE Apt Elev | 5902 7610 7611 |
|--|------------------------|-----------------------------|---|

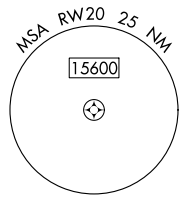
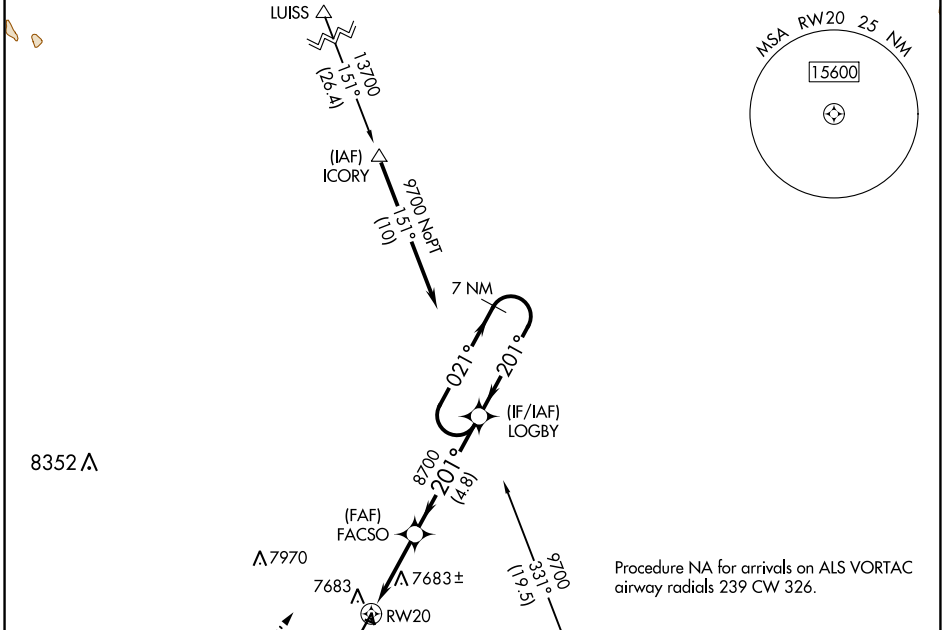
RNAV (GPS) RWY 20

MONTE VISTA MUNI (MVI)

NA Circling NA to Rwys 10, 28, 16 and 34. DME/DME RNP-0.3 NA. Baro-VNAV NA. Use Alamosa altimeter setting.

MISSED APPROACH: (Do not exceed 190K until LOGBY) Climb to 8100 on heading 201° then climbing right turn to 9700 direct LOGBY and hold.

| | | |
|------------------------------|--|-------------------------------|
| ALS AWOS-3 135.175 | DENVER CENTER 128.375 379.95 | UNICOM 122.8 (CTAF) |
|------------------------------|--|-------------------------------|



Procedure NA for arrivals on ALS VORTAC airway radials 239 CW 326.

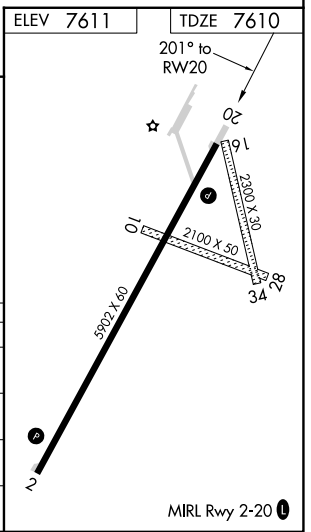
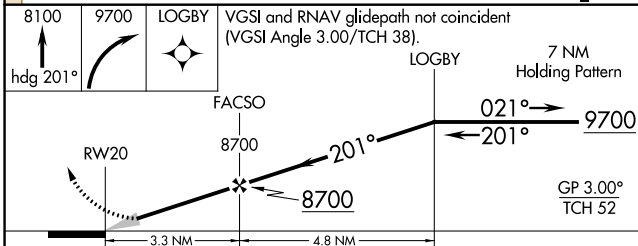
8100 ↑ hdg 201°

9700 ↘

LOGBY

VGSI and RNAV glidepath not coincident (VGSI Angle 3.00/TCH 38).

7 NM Holding Pattern



| CATEGORY | A | B | C | D |
|-------------------|-----------------------|-----------------------|-------------------------|-------------------------|
| LPV DA | | 7894-1 | 284 (300-1) | |
| LNAV/VNAV DA | | 7894-1 | 284 (300-1) | |
| LNAV MDA | | 7980-1 | 370 (400-1) | |
| C CIRCLING | 8060-1 449 (500-1) | 8080-1 469 (500-1) | 8180-1½ 569 (600-1½) | 8360-2½ 749 (800-2½) |

SW-1, 26 DEC 2024 to 23 JAN 2025

SW-1, 26 DEC 2024 to 23 JAN 2025

MIRL Rwy 2-20