

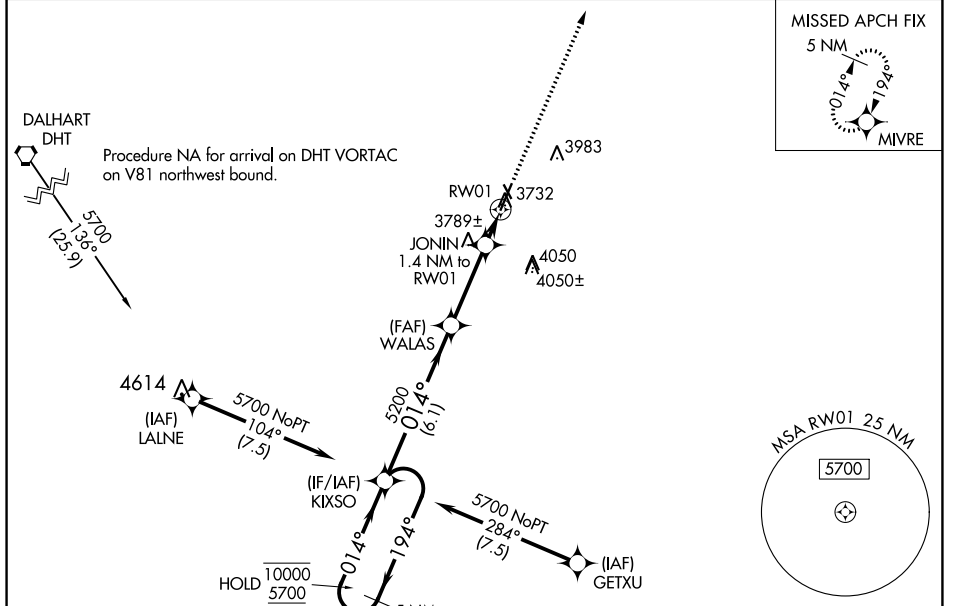
APP CRS	Rwy Idg	6001
014°	TDZE	3706
	Apt Elev	3706

RNAV (GPS) RWY 1

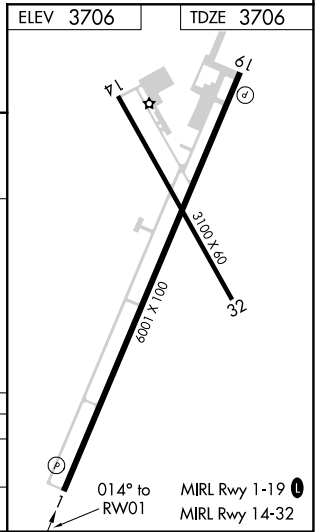
MOORE COUNTY (DUX)

RNP APCH - GPS.		MISSED APPROACH: Climb to 5700 direct MIVRE and hold.
Circling Rwy 14, 32 NA at night.		

AWOS-3 118.075	ALBUQUERQUE CENTER 127.85 285.475	UNICOM 122.8 (CTAF) 0
--------------------------	---	---------------------------------



5 NM Holding Pattern		KIXSO		WALAS		JONIN 1.4 NM to RW01		RW01	
10000	← 194°	→ 014°	014°	5200	4200	3.00°	TCH 50	0.9 NM to RW01	3100 X 400
5700									6001 X 100
		6.1 NM		3.1 NM		0.5 NM		0.9	
CATEGORY	A	B	C	D					
LNAV MDA	4040-1		334 (400-1)						
CIRCLING	4100-1 394 (400-1)	4300-1 594 (600-1)	4400-2 694 (700-2)	4400-2¼ 694 (700-2¼)					



SC-2, 26 DEC 2024 to 23 JAN 2025

SC-2, 26 DEC 2024 to 23 JAN 2025