

APP CRS	Rwy Idg	<b>6001</b>
<b>194°</b>	TDZE	<b>3701</b>
	Apt Elev	<b>3706</b>

# RNAV (GPS) RWY 19

MOORE COUNTY (DUX)

RNP APCH - GPS.

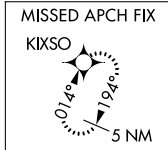
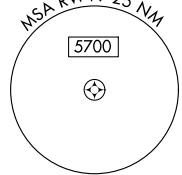
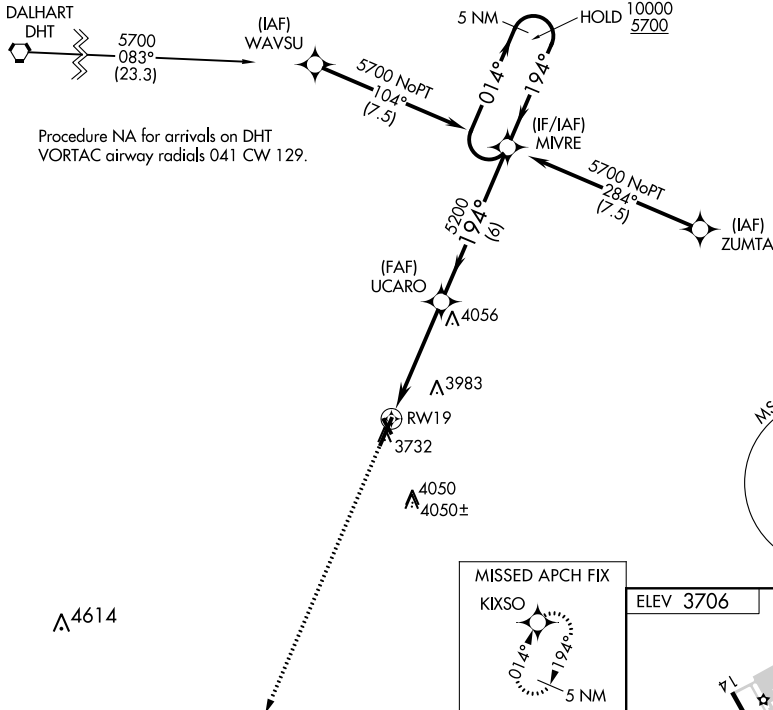
**▼** Circling Rwy 14, 32 NA at night.  
**▲** Rwy 19 helicopter visibility reduction below 3/4 SM NA.

MISSED APPROACH: Climb to 5700 direct KIXSO and hold.

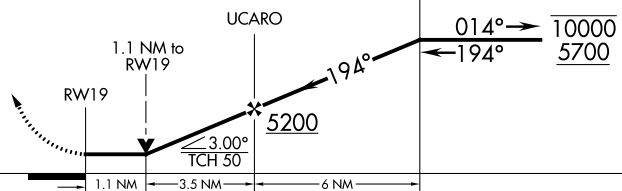
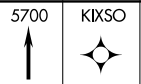
AWOS-3  
**118.075**

ALBUQUERQUE CENTER  
**127.85 285.475**

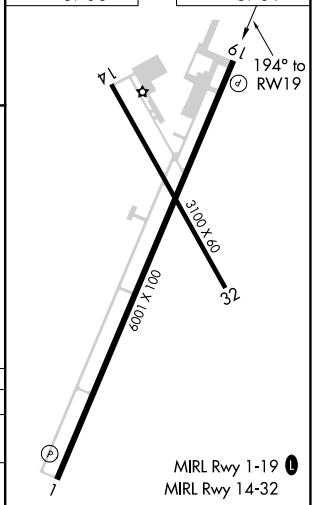
UNICOM  
**122.8 (CTAF) 0**



ELEV 3706	TDZE 3701
-----------	-----------



CATEGORY	A	B	C	D
LNVA MDA	4100-1	399 (400-1)	4100-1 1/8	399 (400-1 1/8)
<b>☐</b> CIRCLING	4100-1 394 (400-1)	4300-1 594 (600-1)	4400-2 694 (700-2)	4400-2 1/4 694 (700-2 1/4)



SC-2, 26 DEC 2024 to 23 JAN 2025

SC-2, 26 DEC 2024 to 23 JAN 2025