

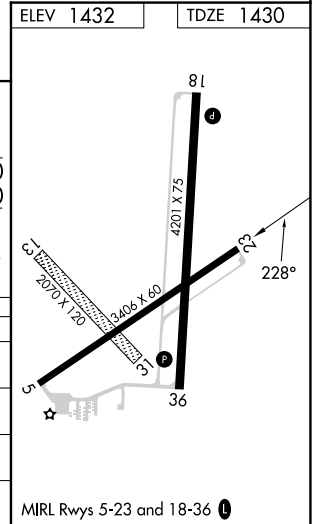
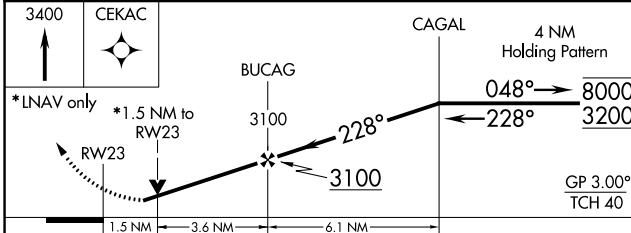
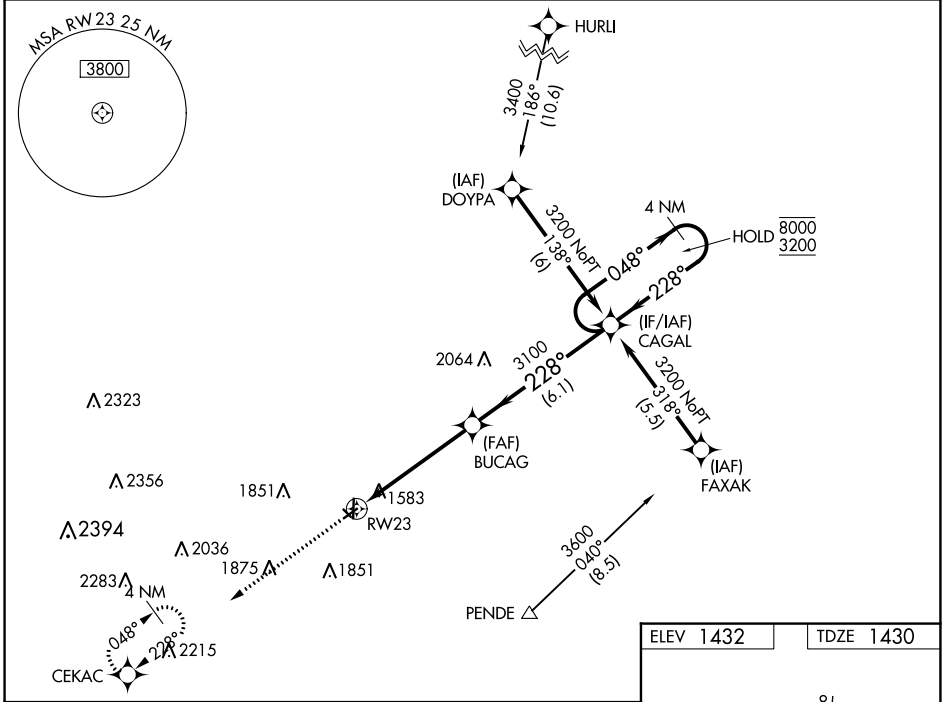
WAAS CH 82523 W23A	APP CRS 228°	Rwy Idg TDZE 1430 Apt Elev 1432
--	------------------------	---

RNAV (GPS) RWY 23

WAYNE MUNI/STAN MORRIS FLD (L.C.G)

RNP APCH.	MISSED APPROACH: Climb to 3400 direct CEKAC and hold.
-----------	---

AWOS-3 120.125	SIoux CITY APP CON * 124.6 307.0	UNICOM 122.8 (CTAF) 1
--------------------------	--	---------------------------------



CATEGORY	A	B	C	D
LPV DA	1866-1½	436 (500-1½)		NA
LNAV/VNAV DA	1869-1½	439 (500-1½)		NA
LNAV MDA	1940-1	510 (600-1)		NA
CIRCLING	2000-1	568 (600-1)		NA

NC-2, 26 DEC 2024 to 23 JAN 2025

NC-2, 26 DEC 2024 to 23 JAN 2025