

APP CRS	Rwy Idg	4001
286°	TDZE	683
	Apt Elev	683

RNAV (GPS) RWY 28

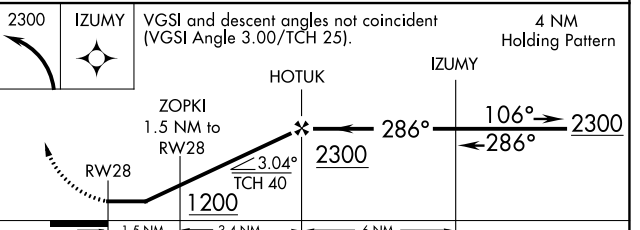
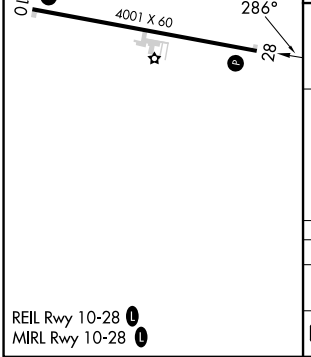
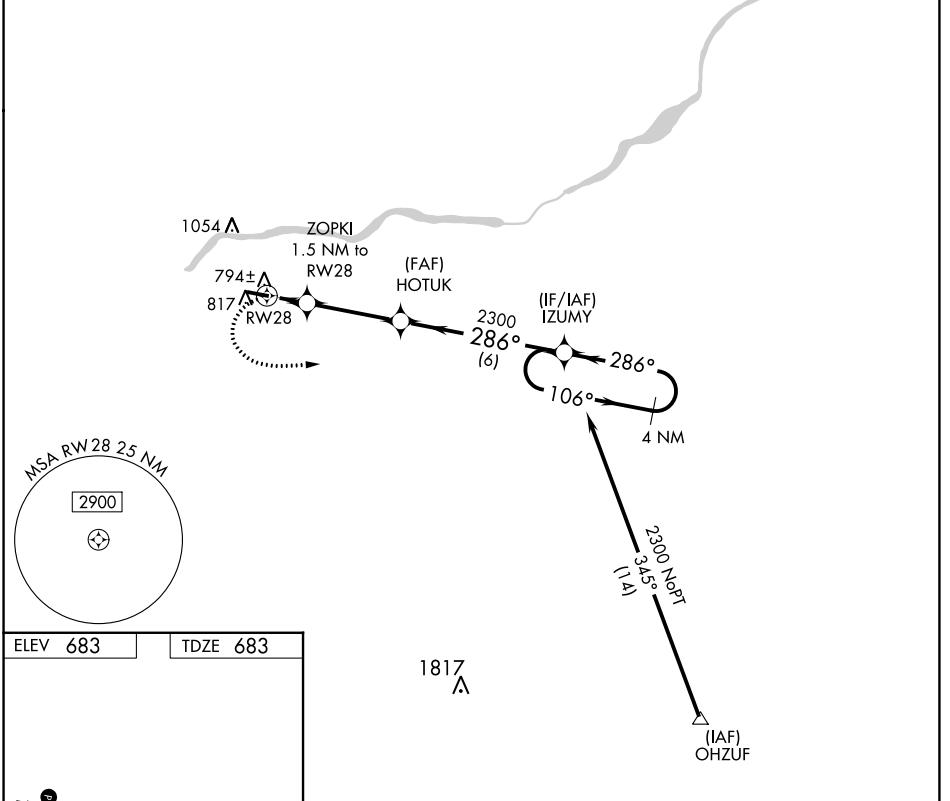
HENRY COUNTY (7W5)

RNP APCH.

▼ Rwy 28 helicopter visibility reduction below 3/4 SM NA.
▲ NA Circling Rwy 10 NA at night. Use Toledo Express altimeter setting. When not received, procedure NA.

MISSED APPROACH: Climbing left turn to 2300 direct IZUMY and hold.

TOL ASOS	TOLEDO APP CON	UNICOM
118.75 290.225	134.35 307.0	123.0 (CTAF) 0



CATEGORY	A	B	C	D
LNAV MDA	1100-1	417 (500-1)	1100-1 1/8 417 (500-1 1/8)	NA
C CIRCLING	1220-1	537 (600-1)	1400-2 717 (800-2)	NA