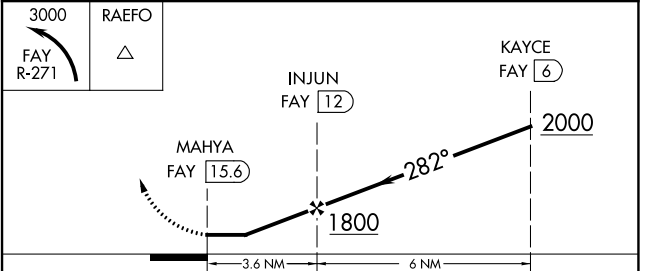
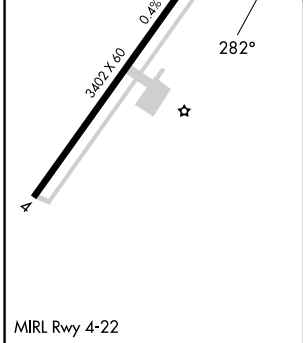
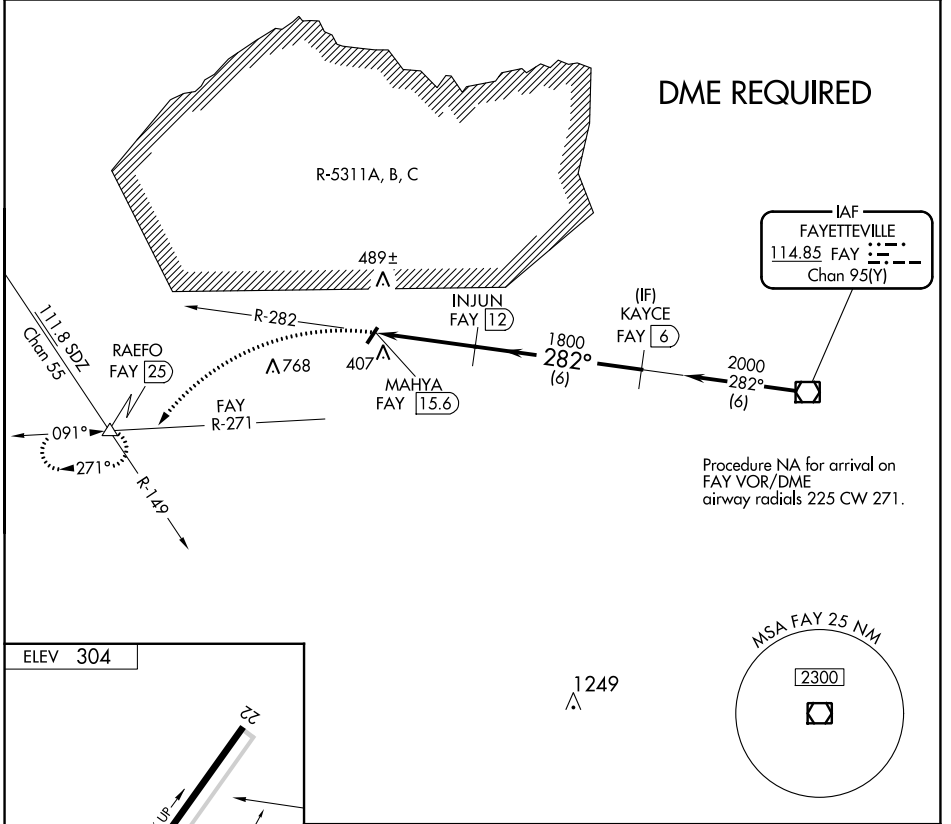


VOR/DME FAY 114.85 Chan 95(Y)	APP CRS 282°	Rwy Idg TDZE Apt Elev N/A N/A 304
----------------------------------------------------------	------------------------	-----------------------------------------------------------------------

VOR-A

P K AIRPARK (5W4)

▼ ▲ NA	DME required. Procedure NA at night. Use Fayetteville altimeter setting.	MISSED APPROACH: Climbing left turn to 3000 on FAY VOR/DME R-271 to RAEFO/FAY 25 DME and hold.
FAYETTEVILLE APP CON 127.8 290.25		UNICOM 123.0 (CTAF)



CATEGORY	A	B	C	D
☑ CIRCLING	840-1 536 (600-1)	860-1 556 (600-1)	920-1 ³ / ₄ 616 (700-1 ³ / ₄)	NA

VOR-A

SE-2, 26 DEC 2024 to 23 JAN 2025

SE-2, 26 DEC 2024 to 23 JAN 2025