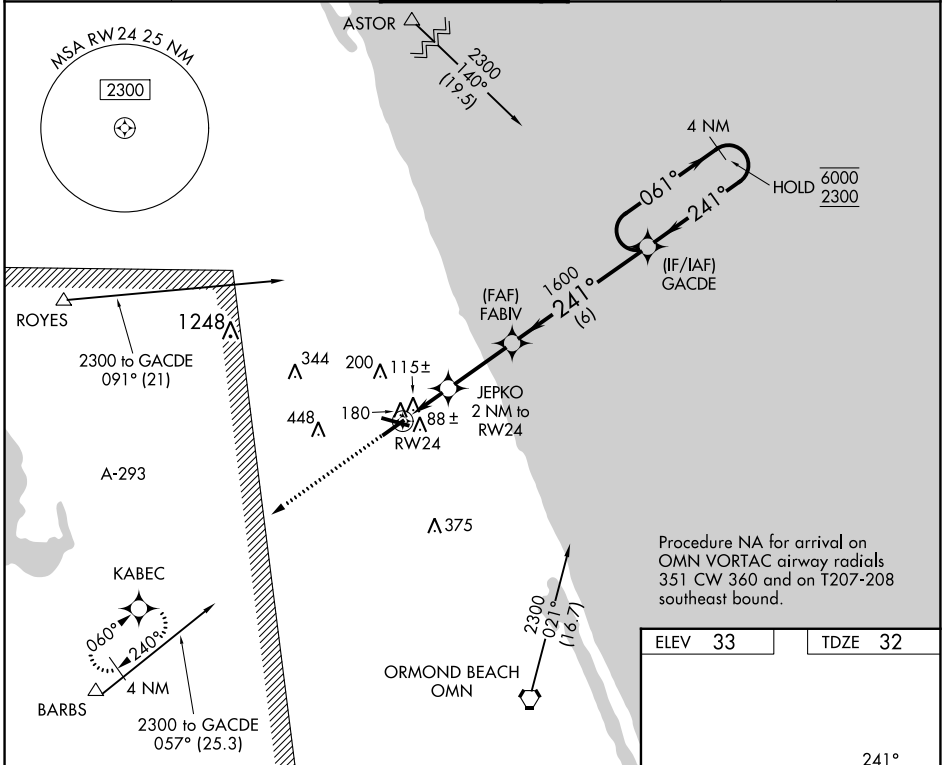


WAAS CH 86742 W24A	APP CRS 241°	Rwy Idg TDZE Apt Elev	5001 32 33
--	------------------------	-----------------------------	---------------------------------------

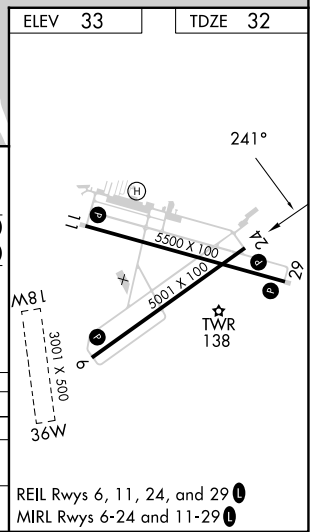
RNAV (GPS) RWY 24

FLAGLER EXEC (FIN)

RNP APCH.		MISSED APPROACH: Climb to 2300 direct KABEC and hold.			
ATIS 128.325	DAYTONA APP CON 125.8 269.075	FLAGLER TOWER ★ 118.95 (CTAF) 0	GND CON 121.75	CLNC DEL 121.75	UNICOM 123.0



Procedure NA for arrival on OMN VORTAC airway radials 351 CW 360 and on T207-208 southeast bound.



2300	KABEC	GACDE 4 NM Holding Pattern			
		JEPKO 2 NM to RWY 24	FABIV	061° → 6000 ← 241° 2300	
		1 NM to RWY 24	3.00° TCH 40	1600	
		1 NM	1 NM	2.8 NM	6 NM
CATEGORY		A	B	C	D
LP MDA		380-1 348 (400-1)			
LNVA MDA		440-1 408 (500-1)		440-1 1/8 408 (500-1 1/8)	
CIRCLING		500-1 467 (500-1)		760-2 760-2 1/4 (800-2) (800-2 1/4)	

REIL Rwy 6, 11, 24, and 29 **0**
MIRL Rwy 6-24 and 11-29 **0**

SE-3, 26 DEC 2024 to 23 JAN 2025

SE-3, 26 DEC 2024 to 23 JAN 2025