

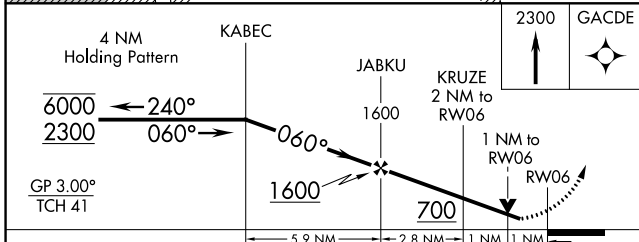
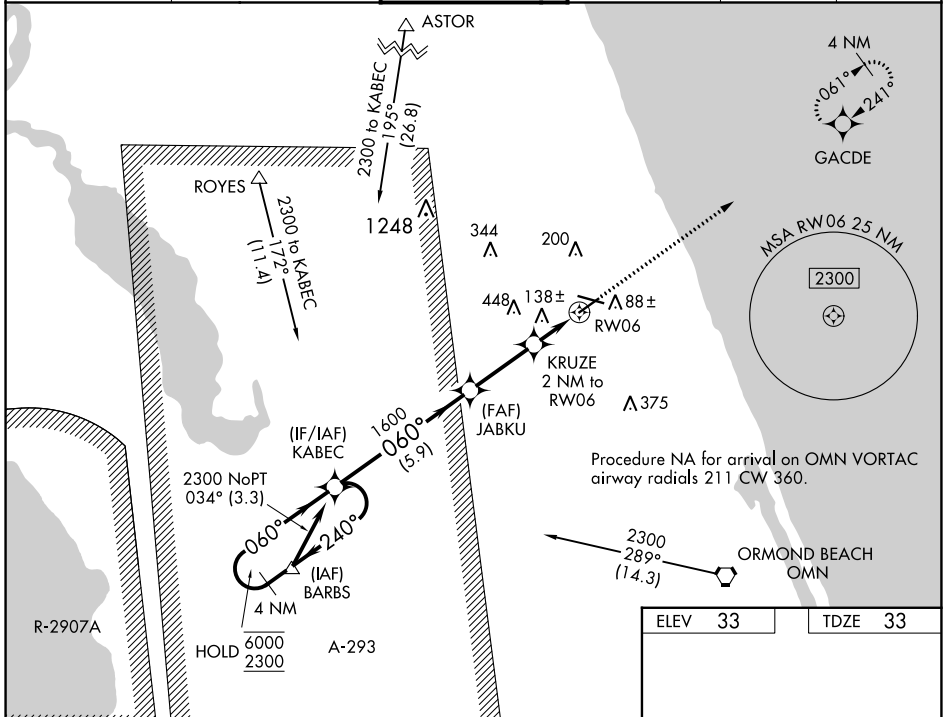
WAAS CH <b>49209</b> <b>W06A</b>	APP CRS <b>060°</b>	Rwy Idg TDZE Apt Elev	<b>5001</b> <b>33</b> <b>33</b>
--	------------------------	-----------------------------	---------------------------------------

# RNAV (GPS) RWY 6

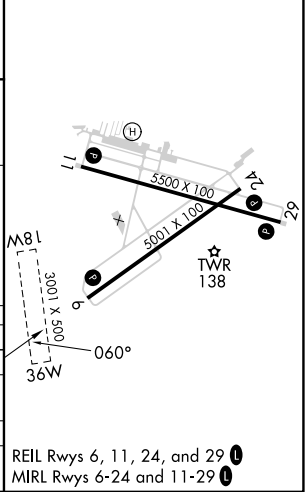
FLAGLER EXEC (FIN)

RNP APCH-GPS.		MISSED APPROACH: Climb to 2300 direct GACDE and hold.			
<b>⚠</b>	Circling NA to Rwys 18W and 36W. Circling Rwy 11, 29 NA at night.				
<b>⚠</b>	Rwy 6 helicopter visibility reduction below ¼ SM NA. For uncompensated Baro-VNAV systems, LNAV/VNAV NA below -15°C or above 54°C.				

ATIS <b>128.325</b>	DAYTONA APP CON <b>125.8 269.075</b>	FLAGLER TOWER ★ <b>118.95 (CTAF) 0</b>	GND CON <b>121.75</b>	CLNC DEL <b>121.75</b>	UNICOM <b>123.0</b>
------------------------	---	---	--------------------------	---------------------------	------------------------



ELEV 33	TDZE 33
---------	---------



CATEGORY	A	B	C	D
LPV DA		312-7/8	279 (300-7/8)	
LNAV/VNAV DA		292-3/4	259 (300-3/4)	
LNAV MDA		400-1	367 (400-1)	
CIRCLING	500-1 467 (500-1)		760-2 727 (800-2)	760-2 1/4 727 (800-2 1/4)

SE-3, 26 DEC 2024 to 23 JAN 2025

SE-3, 26 DEC 2024 to 23 JAN 2025