

| | | | |
|--|------------------------|-----------------------------|---|
| WAAS CH 78238 W17A | APP CRS 174° | Rwy Idg TDZE Apt Elev | 4149 1232 1232 |
|--|------------------------|-----------------------------|---|

RNAV (GPS) RWY 17

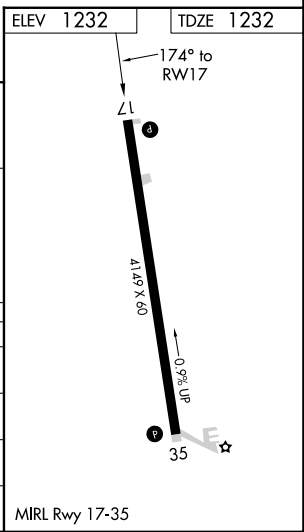
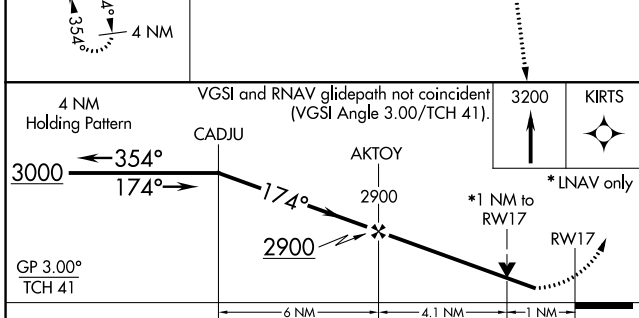
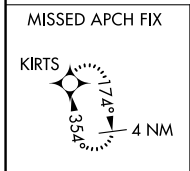
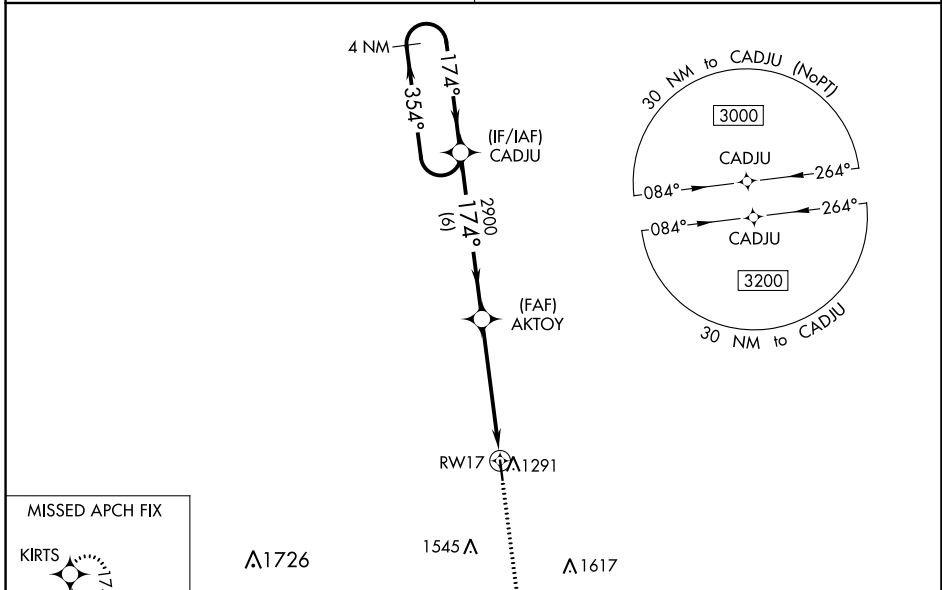
GEORGE L SCOTT MUNI (3Y2)

RNP APCH.

NA For uncompensated Baro-VNAV systems, LNAV/VNAV NA below -17°C (2°F) or above 54°C (130°F). Baro-VNAV and VDP NA when using DecoraH altimeter setting. Helicopter visibility reduction below 3/4 SM NA. Obtain local altimeter setting on CTAF; when not received, use DecoraH altimeter setting and increase LPV and LNAV/VNAV DA to 1533 all Cats, increase all MDA 60 feet, and LNAV Cat C visibility 1/8 mile.

MISSED APPROACH: Climb to 3200 direct KIRTS and hold.

| | |
|-------------------------------------|-------------------------------|
| MINNEAPOLIS CENTER 118.85 | UNICOM 122.8 (CTAF) |
|-------------------------------------|-------------------------------|



| CATEGORY | A | B | C | D |
|-------------------|--------|-------------|-------------------------------|----|
| LPV DA | 1482-1 | 250 (300-1) | | NA |
| LNAV/VNAV DA | 1482-1 | 250 (300-1) | | NA |
| LNAV MDA | 1580-1 | 348 (400-1) | | NA |
| C CIRCLING | 1740-1 | 508 (600-1) | 1860-1 3/4 628 (700-1 3/4) | NA |

NC-3, 26 DEC 2024 to 23 JAN 2025

NC-3, 26 DEC 2024 to 23 JAN 2025