

WAAS CH 50416 W02A	APP CRS 020°	Rwy Idg 6100 TDZE 3786 Apt Elev 3788
--	------------------------	---

RNAV (GPS) RWY 2

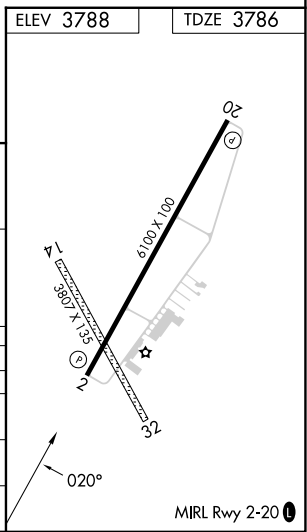
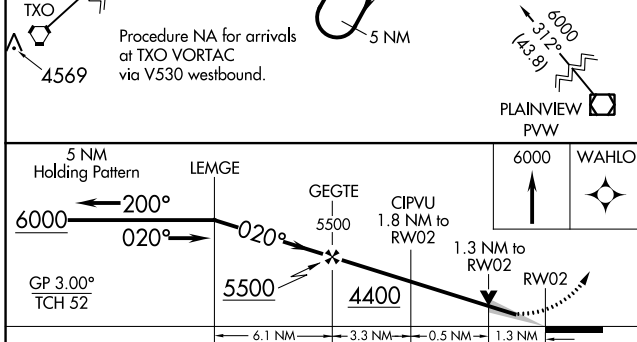
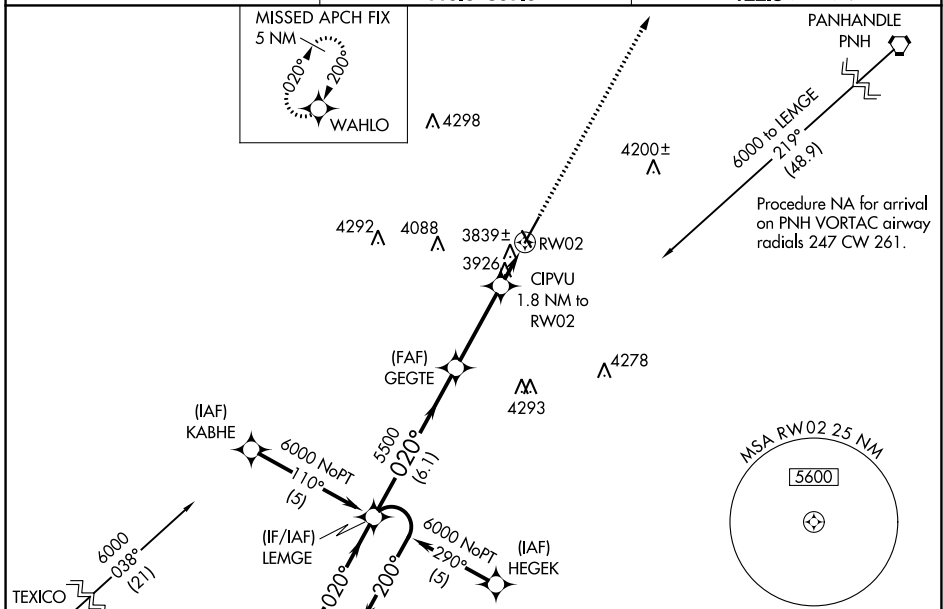
HEREFORD MUNI (HR.X)

RNP APCH - GPS.

⚠ For uncompensated Baro-VNAV systems, LNAV/VNAV NA below -22°C or above 41°C. When local altimeter setting not received, use AMA altimeter setting: increase LPV DA to 4098 feet and all visibilities ¼ SM; increase LNAV/VNAV DA to 4238 feet and all visibilities ¼ SM; increase all MDAs 120 feet and LNAV visibility Cats C and D ¼ SM, increase Circling visibility Cat C ½ SM and Cat D ¼ SM. Circling NA to Rwys 14 and 32. Baro-VNAV and VDP NA when using AMA altimeter setting.

MISSED APPROACH:
Climb to 6000 direct WAHLO and hold.

AWOS-3 118.05	AMARILLO APP CON ★ 119.5 307.0	UNICOM 122.8 (CTAF) 0
-------------------------	--	---------------------------------



CATEGORY	A	B	C	D
LPV DA	3986-3/4 200 (200-3/4)			
LNAV/DA VNAV	4126-1 1/4 340 (400-1 1/4)			
LNAV MDA	4240-1	454 (500-1)	4240-1 1/4 454 (500-1 1/4)	4240-1 1/2 454 (500-1 1/2)
CIRCLING	4280-1	492 (500-1)	4440-1 3/4 652 (700-1 3/4)	4620-2 3/4 832 (900-2 3/4)

SC-2, 26 DEC 2024 to 23 JAN 2025

SC-2, 26 DEC 2024 to 23 JAN 2025