

APP CRS **160°**
 Rwy Idg **5004**
 TDZE **1023**
 Apt Elev **1023**

RNAV (GPS) RWY 16

SEMINOLE MUNI (SRE)

RNP APCH

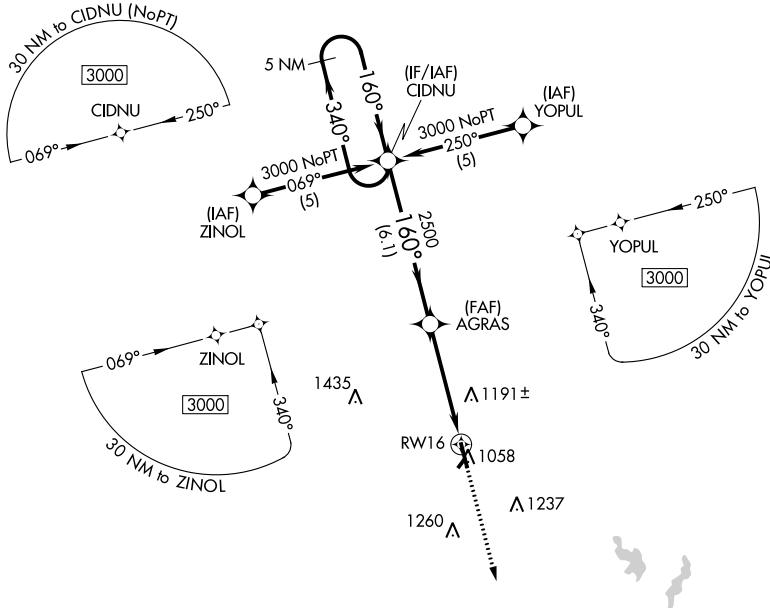
Procedure NA at night. Circling NA to Rwy 5 and 23. Rwy 16 helicopter visibility reduction below 1 SM NA. When local altimeter setting not received, use Shawnee Rgnl altimeter setting and increase all MDAs 40 feet, and increase Circling Cat C visibility ¼ SM.

MISSED APPROACH: Climb to 3000 direct FANAD and hold.

AWOS-3
118.625

FORT WORTH CENTER
132.2 338.35

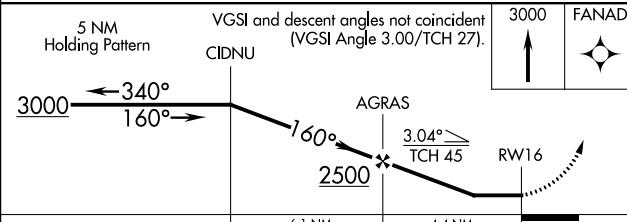
UNICOM
122.80



ELEV 1023 TDZE 1023



REIL Rwy 16-34
 MIRL Rwy 16-34



CATEGORY	A	B	C	D
LNAV MDA	1500-1	477 (500-1)	1500-1¼ 477 (500-1¼)	NA
CIRCLING	1500-1 477 (500-1)	1560-1 537 (600-1)	1620-1½ 597 (600-1½)	NA

SC-1, 26 DEC 2024 to 23 JAN 2025

SC-1, 26 DEC 2024 to 23 JAN 2025