

WAAS CH 65813 W16A	APP CRS 155°	Rwy Idg 5816 TDZE 3174 Apt Elev 3174
--	------------------------	---

RNAV (GPS) RWY 16

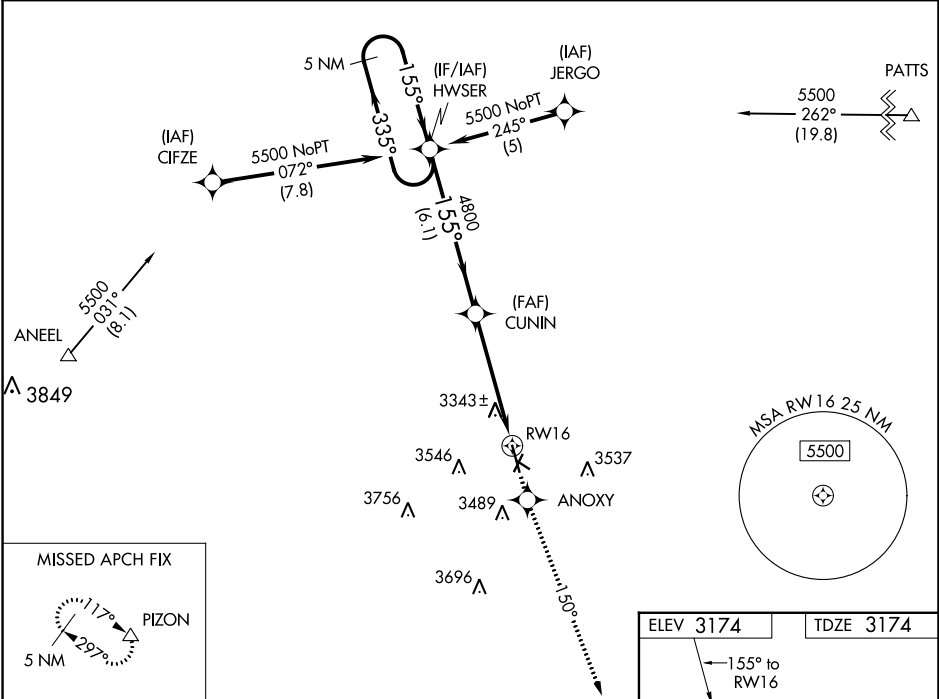
ANDREWS COUNTY (E11)

RNP APCH-GPS.

▼ Circling NA west of Rwy 16/34. Rwy 16 helicopter visibility reduction below 3/4 SM NA.
▲ When local altimeter setting not received, use Midland altimeter setting. For uncompensated Baro-VNAV systems, LNAV/VNAV NA below -21°C or above 54°C. Circling Rwy 2, 11, 20, 29, 34 NA at night. VDP NA when using Midland altimeter setting.

MISSED APPROACH: Climb to 5000 direct ANOXY and via track 150° to PIZON and hold.

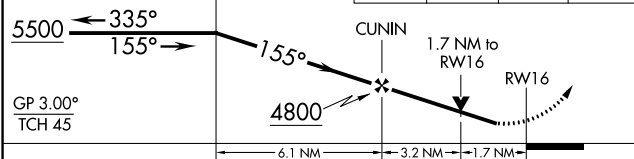
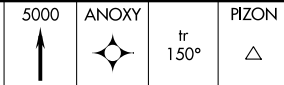
AWOS - 3 118.2	MIDLAND APP CON ★ 124.6 290.4	UNICOM 122.8 (CTAF) ①
--------------------------	---	--



SC-2, 26 DEC 2024 to 23 JAN 2025

SC-2, 26 DEC 2024 to 23 JAN 2025

VGSI and RNAV glidepath not coincident (VGSI Angle 3.00/TCH 37).
 5 NM Holding Pattern HWSER



CATEGORY	A	B	C	D
LPV DA	3533-1¼	359 (400-1¼)		NA
LNAV/VNAV DA	3802-2¼	628 (700-2¼)		NA
LNAV MDA	3780-1	606 (700-1)	3780-1¾ 606 (700-1¾)	NA
CIRCLING	3780-1	606 (700-1)	4000-2½ 826 (900-2½)	NA

