

APP CRS	Rwy Idg	3902
162°	TDZE	858
	Apt Elev	862

RNAV (GPS) RWY 16

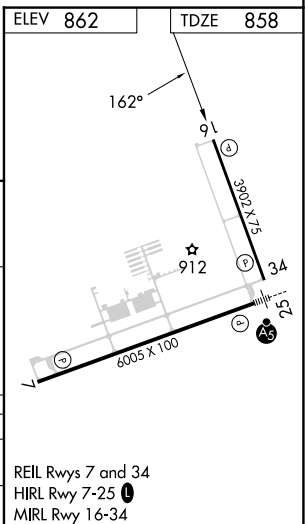
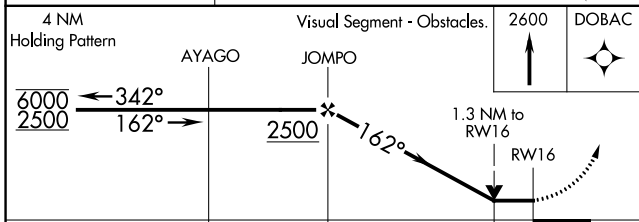
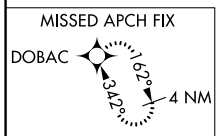
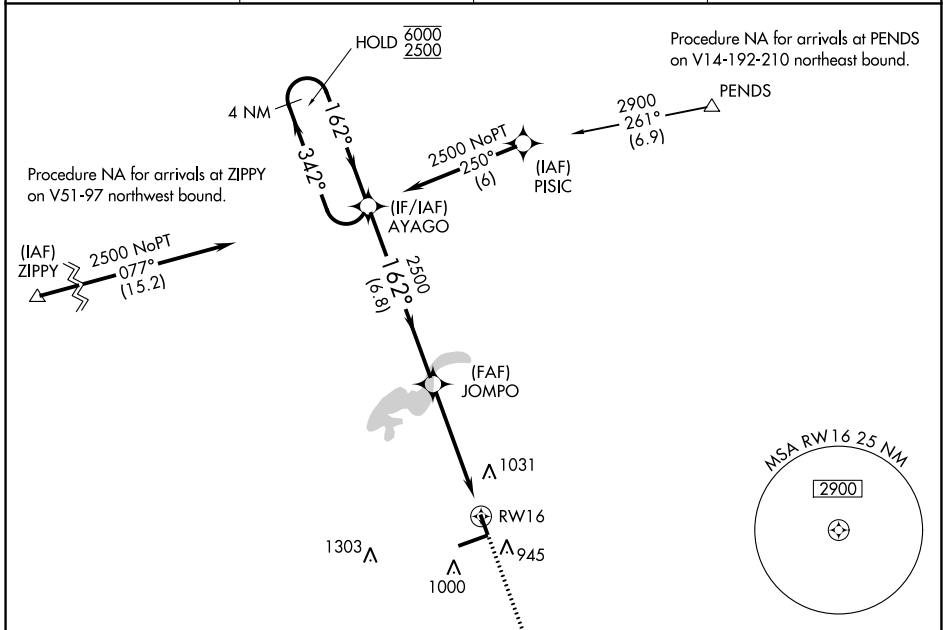
INDIANAPOLIS RGNL (MQJ)

RNP APCH - GPS.

⚠ Rwy 16 helicopter visibility reduction below 3/4 SM NA. VDP NA when using Indianapolis altimeter setting. When local altimeter setting not received, use Indianapolis altimeter setting: increase all MDAs 60 feet and LNAV visibility Cats C and D 1/2 SM; increase Circling visibility Cat D 1/4 SM.

MISSED APPROACH:
Climb to 2600 direct DOBAC and hold.

AWOS-3PT 124.175	INDIANAPOLIS APP CON 127.15 317.8	CLNC DEL 119.25	UNICOM 122.975 (CTAF) 📻
----------------------------	---	---------------------------	--



CATEGORY	A	B	C	D
LNAV MDA	1320-1	462 (500-1)	1320-1 ³ / ₈	462 (500-1 ³ / ₈)
C CIRCLING	1340-1	478 (500-1)	1360-1 ¹ / ₂	1660-2 ¹ / ₂
			498 (500-1 ¹ / ₂)	798 (800-2 ¹ / ₂)

REIL Rwys 7 and 34
HIRL Rwy 7-25 **📻**
MIRL Rwy 16-34

EC-2, 26 DEC 2024 to 23 JAN 2025

EC-2, 26 DEC 2024 to 23 JAN 2025